

PROJECT NAME: M-PESA	
DOCUMENT NAME: DEVELOPER'S GUIDE- B2B INTERFACE	VERSION: 0.3
COMPANY/DIVISION: PRODUCT AND SERVICE DEVELOPMENT	DATE: 24 TH APRIL 2015

Developer's Guide B2B *Interface*

V0.3

PROJECT NAME: M-PESA	
DOCUMENT NAME: DEVELOPER'S GUIDE- B2B INTERFACE	VERSION: 0.3
COMPANY/DIVISION: PRODUCT AND SERVICE DEVELOPMENT	DATE: 24 TH APRIL 2015

Approvals

This document needs below approvals for implementation.

Author(s)	Name	Signature	Date
Service Development Engineer	Eneth Kubai		
Reviewers	Name	Signature	Date
Senior Manager Service Development	Reginald Tole		
HOD - Product Development, MPESA	Brian Wamatu		

Revision Log



Revision Number	Revision Date	Revision	Revision made by
0.1	September 7, 2014	Initial Draft	Eneth Kubai
0.2	October 1, 2014	Added new interface	Eneth Kubai
0.3	April 24, 2015	Updated the interface	Eneth Kubai

PROJECT NAME: M-PESA	
DOCUMENT NAME: DEVELOPER'S GUIDE- B2B INTERFACE	VERSION: 0.3
COMPANY/DIVISION: PRODUCT AND SERVICE DEVELOPMENT	DATE: 24 TH APRIL 2015

Abbreviations

Term	Definition
API	Application Programming Interface
B2B	Business to Business
Broker	Service Access Gateway
SP	Service Provider

References

Document	Author	Name
 Response and Result codesV1.0.xls	Eneth Kubai	Response and Result Codes V1.0
 SSL.pdf	John Barii	SSL Guide

PROJECT NAME: M-PESA	
DOCUMENT NAME: DEVELOPER'S GUIDE- B2B INTERFACE	VERSION: 0.3
COMPANY/DIVISION: PRODUCT AND SERVICE DEVELOPMENT	DATE: 24 TH APRIL 2015

Table of Contents

Approvals.....	ii
Revision Log.....	ii
Abbreviations	iii
References.....	iii
■ Introduction.....	7
1.1 Scope.....	7
1.2 Overview – API Framework.....	7
■ Message Flow Description	8
■ Data Type Definition	9
3.1 IdentityType enumeration.....	9
3.2 IdentifierType enumeration	9
3.3 ParameterType structure.....	9
3.4 Parameters structure	9
3.5 ReferenceData structure	10
3.6 Transaction structure	10
3.7 Caller structure	11
3.8 Initiator structure	12
3.8.1 Password Encryption.....	12
3.9 PrimaryParty structure.....	13
3.10 ReceiverParty structure	13
3.11 AccessDevice structure.....	13
3.12 Identity structure	14
3.13 Request structure	14
3.14 Response structure	14
3.15 ResultParameters structure.....	15
3.16 Result structure.....	15
3.17 Result code	16
■ Web Service Interface Definition	21
4.1 Interface: RequestMgrPortType	21
4.1.1 Operation: GenericAPIRequest.....	21
4.2 Interface: ResultMgrPortType.....	23
4.2.1 Operation: GenericAPIResult	23
4.3 Interface: QueueTimeoutNotificationPort.....	24
4.3.1 Operation: notifyQueueTimeout	24

PROJECT NAME: M-PESA	
DOCUMENT NAME: DEVELOPER'S GUIDE- B2B INTERFACE	VERSION: 0.3
COMPANY/DIVISION: PRODUCT AND SERVICE DEVELOPMENT	DATE: 24 TH APRIL 2015

4.4 Interface: QueryTransactionPort	25
4.4.1 Operation: queryTransaction.....	25
4.5 Interface: Management.....	27
4.5.1 Operation: changePassword	27

■ Transaction Types 31

5.1 Request Party Matrix.....	31
5.2 Business Paybill	34
5.3 Disburse Funds to Business.....	36
5.4 Business Buy Goods	38
5.5 BusinessToBusinessTransfer	39
5.6 BusinessTransferFromMMFToUtility	41
5.7 BusinessTransferFromUtilityToMMF	43
5.8 MerchantToMerchantTransfer.....	45
5.9 MerchantTransferFromMerchantToWorking	47
5.10 MerchantTransferFromWorkingToMerchant	49
5.11 OrgBankAccountWithdrawal	51
5.12 OrgRevenueSettlement.....	52
5.13 MerchantServicesMMFAccountTransfer	53
5.14 AgencyFloatAdvance	55
5.15 Balance Query from the Business Customer	57
5.16 Transaction Status Query	60

■ Example 62

6.1 B2B Transactions	62
6.1.1 GenericApiRequest.....	62
6.1.2 GenericApiResponse.....	64
6.1.3 GenericAPIResult	65
6.2 OrgRevenueSettlement.....	66
6.2.1 GenericApiRequest.....	66
6.2.2 GenericApiResponse.....	68
6.2.3 GenericAPIResult	68
6.3 OrgBankAccountWithdrawal	69
6.3.1 GenericApiRequest.....	69
6.3.2 GenericApiResponse.....	71
6.3.3 GenericAPIResult	72
6.4 TransactionStatusQuery	72
6.4.1 GenericApiRequest.....	72
ReceiptNumber	72

PROJECT NAME: M-PESA	
DOCUMENT NAME: DEVELOPER'S GUIDE- B2B INTERFACE	VERSION: 0.3
COMPANY/DIVISION: PRODUCT AND SERVICE DEVELOPMENT	DATE: 24 TH APRIL 2015

OriginatorConversationID	75
ConversationID	77
6.4.2 GenericApiResponse.....	79
6.4.3 GenericAPIResult	80
6.5 Balance Check.....	81
6.5.1 GenericAPIRequest.....	81
6.5.2 GenericApiResponse.....	83
6.5.3 GenericAPIResult	83
6.6 notifyQueueTimeout	84
6.6.1 The Broker send notification to the 3rd party	84
6.6.2 The 3rd party return response to the Broker.....	86
6.7 queryTransaction	87
6.7.1 The 3rd party sends query request to the Broker.....	87
6.7.2 The Broker return response to the 3rd party.....	88
6.8 changePassword	92
6.8.1 Request example:	92
6.8.2 Response example:.....	92

PROJECT NAME: M-PESA	
DOCUMENT NAME: DEVELOPER'S GUIDE- B2B INTERFACE	VERSION: 0.3
COMPANY/DIVISION: PRODUCT AND SERVICE DEVELOPMENT	DATE: 24 TH APRIL 2015

Introduction

1.1 Scope

The present document specifies the real time B2B Web Service aspects of the interface. All aspects of B2B Web Service are defined here, these being:

- Message Flow Description
- Data Type Definition
- Web Service Interface Definition
- Transaction Types description
- WSDL for this specification
- Example

1.2 Overview – API Framework


This document details the interface specification for a real time M-Pesa transaction API delivered within the MPesa Core API Framework. The Core API defines an abstract model for API requests which includes 4 distinct parties to API operations, as well as a generic set of API operation parameters.

Initiators are the organization or entity requesting that an API operation or transaction is performed.

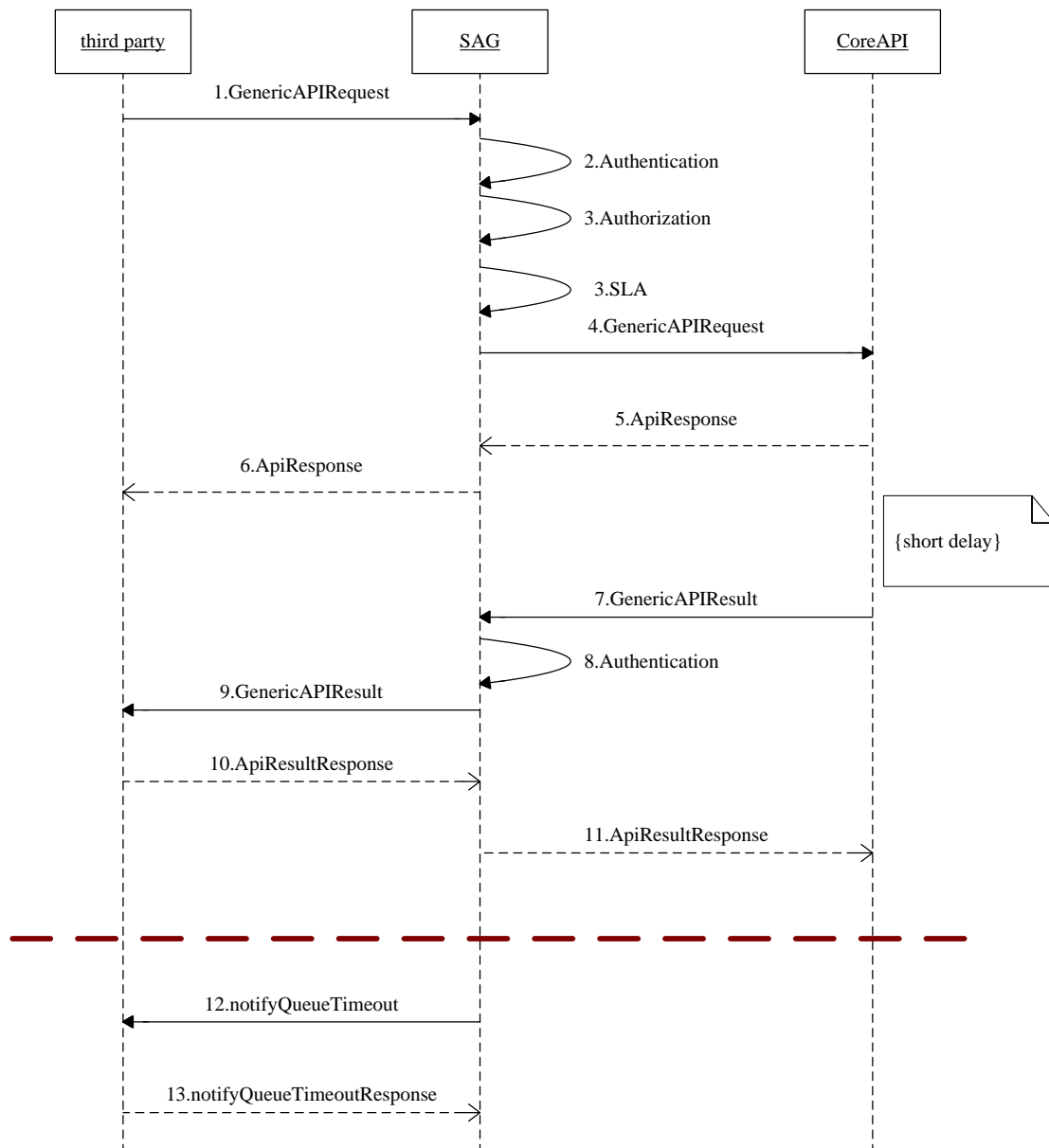
The *Caller* is the actual piece of software which communicates with the MPesa Core API web service.

The *Primary Party* is (typically) the debit party within an existing MPesa financial transaction.

The *Receiver Party* is correspondingly the credit party in an MPesa financial transaction.

PROJECT NAME: M-PESA	
DOCUMENT NAME: DEVELOPER'S GUIDE- B2B INTERFACE	VERSION: 0.3
COMPANY/DIVISION: PRODUCT AND SERVICE DEVELOPMENT	DATE: 24 TH APRIL 2015

Message Flow Description



PROJECT NAME: M-PESA	
DOCUMENT NAME: DEVELOPER'S GUIDE- B2B INTERFACE	VERSION: 0.3
COMPANY/DIVISION: PRODUCT AND SERVICE DEVELOPMENT	DATE: 24 TH APRIL 2015

Data Type Definition

3.1 IdentityType enumeration

List of IdentityType values.

Enumeration	Description
1000	Customer
2000	SPOperator
3000	OrganizationOperator
5000	Organization
6000	Till
8000	SP

3.2 IdentifierType enumeration

List of IdentityType values.

Enumeration	Description
1	MSISDN
2	TillNumber
3	SPShortCode
4	OrganizationShortCode
5	IdentityID
6	O2CLink
9	SPOperatorCode
10	POSNumber
11	OrganizationOperatorUserName
12	OrganizationOperatorCode
13	VoucherCode

3.3 ParameterType structure

Element name	Element type	Optional	Description
Key	xsd:string	No	It indicates a parameter name.
Value	xsd:string	No	It indicates a parameter value.

3.4 Parameters structure

Element name	Element type	Optional	Description
Parameter	ParameterType[1..unbounded]	No	It is used to carry specific parameters for specific transaction or business operation.

PROJECT NAME: M-PESA	
DOCUMENT NAME: DEVELOPER'S GUIDE- B2B INTERFACE	VERSION: 0.3
COMPANY/DIVISION: PRODUCT AND SERVICE DEVELOPMENT	DATE: 24 TH APRIL 2015

3.5 ReferenceData structure

Element name	Element type	Optional	Description
ReferenceItem	ParameterType[1..unbounded]	No	It is used carry some reference data that MM need not analyze but need to record it into transaction log..

3.6 Transaction structure

Element name	Element type	Optional	Description
CommandID	xsd:string	No	The unique identifier of transaction/business operation. Max length is 64.eg <ul style="list-style-type: none"> <i>BusinessBuyGoods</i> <i>BusinessPayBill</i> <i>DisburseFundsToBusiness</i> <i>BusinessToBusinessTransfer</i> <i>BusinessTransferFromMMFToUtility</i> <i>BusinessTransferFromUtilityToMMF</i> <i>MerchantToMerchantTransfer</i> <i>MerchantTransferFromMerchantToWorking</i> <i>MerchantTransferFromWorkingToMerchant</i> <i>OrgBankAccountWithdrawal</i> <i>OrgRevenueSettlement</i> <i>MerchantServicesMMFAccountTransfer</i> <i>AgencyFloatAdvance</i>
LanguageCode	xsd:string	Yes	It indicates language. It's reserved.
OriginatorConversationID	xsd:string	No	The unique identifier of the request message generated by third party. It is used to identify a request between the third party and MM. Max length is 128. Field must start with the Organisation short and name of organisation. Eg. 232323_KCBOrg_XXXXXX XXXXXX must be unique for every transaction.
ConversationID	xsd:string	Yes	The unique identifier generated by MM for a previous request message. It is used to support communication multi-times between the third party and MM for one operation/transaction.
Remark	xsd:string	Yes	The remark information about this operation. Max length is 255
Parameters	Parameters	Yes	It is used to carry specific parameters for specific transaction or business operation. If the element EncryptedParameters presents, this parameter should not present.
ReferenceData	ReferenceData	Yes	It is used carry some reference data that MM need not analyze but need to record it into transaction log.
Timestamp	xsd:string	No	The timestamp generated by the third party.

PROJECT NAME: M-PESA	
DOCUMENT NAME: DEVELOPER'S GUIDE- B2B INTERFACE	VERSION: 0.3
COMPANY/DIVISION: PRODUCT AND SERVICE DEVELOPMENT	DATE: 24 TH APRIL 2015

3.7 Caller structure

Element name	Element type	Optional	Description
CallerType	xsd:integer	No	Indicates the type of the caller: 2-API Caller 3-Other(Reserved)
ThirdPartyID	xsd:string	No	The unique identifier of a third party system defined in MM. It indicates the third party which initiates the request. Max length is 20
Password	xsd:string	Yes	This security credential of the ThirdPartyID defined in MM. If the password feature for third party is used in MM, then this parameter must be presented in the request message.
Checksum	xsd:string	Yes	Currently it is unused. It is reserved for API security.
ResultURL	xsd:string	Yes	It indicates the destination URL where Broker should send the result message to.

PROJECT NAME: M-PESA	
DOCUMENT NAME: DEVELOPER'S GUIDE- B2B INTERFACE	VERSION: 0.3
COMPANY/DIVISION: PRODUCT AND SERVICE DEVELOPMENT	DATE: 24 TH APRIL 2015

3.8 Initiator structure

Element name	Element type	Optional	Description
IdentifierType	IdentifierType	No	It indicates the identifier type of the initiator. The value of this parameter must be a valid identifier type supported by MM.
Identifier	xsd:string	No	It indicates the identifier of the initiator. Its value must match the inputted value of the parameter IdentifierType.
SecurityCredential	xsd:string	No	It indicates the security credential of the initiator. Its value must match the inputted value of the parameter IdentifierType.
ShortCode	xsd:string	Yes	When the initiator is an organization operator, this parameter must be present in the request to indicate which organization the operator belongs to. If the initiator is not an organization operator, this parameter should not be present.

3.8.1 Password Encryption

The Caller will be required to confirm its authority to act on behalf of the Initiator (in other words, a specific M-PESA organisation) by presenting the user name and password for the Initiator, the latter encrypted with the public key from an X509 certificate issued to the Initiator specifically for this purpose.

The following algorithm must be followed by the Initiator to encrypt passwords:

First, create the block of data to be encrypted:

- Write the unencrypted password value.
- Then, encrypt the block of data created in step 1 with the public portion of the password key certificate. Use the RSA algorithm, and use PKCS #1.5 padding (not OAEP), and add the result to the encrypted stream – this becomes the encrypted password which is submitted via the API.
- Convert the resulting encrypted byte array into a string using base64 encoding. Present this base64 encoded string in the API request as the initiator SecurityCredential value.

PROJECT NAME: M-PESA	
DOCUMENT NAME: DEVELOPER'S GUIDE- B2B INTERFACE	VERSION: 0.3
COMPANY/DIVISION: PRODUCT AND SERVICE DEVELOPMENT	DATE: 24 TH APRIL 2015

3.9 PrimaryParty structure

Element name	Element type	Optional	Description
IdentifierType	IdentifierType	No	It indicates the identifier type of the primary party. The value of this parameter must be a valid identifier type supported by MM and must match the inputted value of the parameter IdentityType.
Identifier	xsd:string	No	It indicates a parameter value.
ShortCode	xsd:string	Yes	It is reserved

3.10 ReceiverParty structure

Element name	Element type	Optional	Description
IdentifierType	IdentifierType	No	It indicates the identifier type of the recipient party. The value of this parameter must be a valid identifier type supported by MM.
Identifier	xsd:string	No	It indicates the identifier of the recipient party. Its value must match the inputted value of the parameter IdentifierType.
ShortCode	xsd:string	Yes	When the receiver party is an organization operator or a Till, this parameter must be present in the request to indicate which organization the receiver party belongs to. If the receiver party is not an organization operator or a Till, this parameter should not be present.

3.11 AccessDevice structure

Element name	Element type	Optional	Description
IdentifierType	IdentifierType	No	It indicates the identifier type of the access device.
Identifier	xsd:string	No	It indicates the identifier of the access device. Its value must match the inputted value of parameter IdentifierType

PROJECT NAME: M-PESA	
DOCUMENT NAME: DEVELOPER'S GUIDE- B2B INTERFACE	VERSION: 0.3
COMPANY/DIVISION: PRODUCT AND SERVICE DEVELOPMENT	DATE: 24 TH APRIL 2015

3.12 Identity structure

Element name	Element type	Optional	Description
Caller	Caller	No	It indicates the third party which initiates the request
Initiator	Initiator	No	It indicates the identity who makes the request. An initiator must be one of the following identity types: <ul style="list-style-type: none"> • SP operator • Organization operator(11) NOTE The value "11"(Organization Operator)or '14'(SP Operator) will be used for all the services in this document.
PrimaryParty	PrimaryParty	Yes	If business operation/action, this element is not present; if transaction, this can be either the debit party or the credit party according to the transaction type.
ReceiverParty	ReceiverParty	Yes	If business operation/action, this is the affected party; if transaction, it is the opposite party to the PrimaryParty
AccessDevice	AccessDevice	Yes	It indicates the access device which the initiator uses to initiate the request.

3.13 Request structure

Element name	Element type	Optional	Description
Transaction	Transaction	No	It indicates a transaction.
Identity	Identity	No	This section is used to specify all identities involved in the request
KeyOwner	xsd:integer	No	It indicates which Key is used to encrypt the elements Initiator.SecurityCredential and the EncryptedParameters. Its value are enumerated as follows: 1:the API Caller's Key 2:the Initiator's Key

3.14 Response structure

Element name	Element type	Optional	Description
ResponseCode	xsd:string	No	It indicates whether MM accepts the request or not.
ResponseDesc	xsd:string	Yes	Its value is a description for the parameter ResultCode.
ConversationID	xsd:string	Yes	The unique identifier generated by M-Pesa for the request message.
OriginatorConversationID	xsd:string	Yes	The unique identifier generated by the third party for the request message.
ServiceStatus	xsd: integer	Yes	It indicates the MM service status.

PROJECT NAME: M-PESA	
DOCUMENT NAME: DEVELOPER'S GUIDE- B2B INTERFACE	VERSION: 0.3
COMPANY/DIVISION: PRODUCT AND SERVICE DEVELOPMENT	DATE: 24 TH APRIL 2015

3.15 ResultParameters structure

Element name	Element type	Optional	Description
ResultParameter	ParameterType [0...unbounded]	Yes	It is used to carry specific parameters for specific transaction or business operation.

3.16 Result structure

Element name	Element type	Optional	Description
ResultType	xsd:integer	Yes	0: completed 1: waiting for further messages
ResultCode	xsd:string	No	It indicates whether MM processes the request successfully or not. Max length is 10
ResultDesc	xsd:string	Yes	Its value is a description for the parameter ResultCode. Max length is 1024
OriginatorConversationID	xsd:string	Yes	The unique identifier of the request message generated by third party. Its value comes from the request message.
ConversationID	xsd:string	Yes	The unique identifier generated by MM for a request
TransactionID	xsd:string	Yes	It's only for transaction. When the request is a transaction request, MM will generate a unique identifier for the transaction.
ResultParameters	ResultParameters	Yes	It is used to carry specific parameters for specific transaction or business operation.
ReferenceData	ReferenceData	Yes	It comes from the request message

PROJECT NAME: M-PESA	
DOCUMENT NAME: DEVELOPER'S GUIDE- B2B INTERFACE	VERSION: 0.3
COMPANY/DIVISION: PRODUCT AND SERVICE DEVELOPMENT	DATE: 24 TH APRIL 2015

3.17 Result code

Error code	Error Description	
0	Success	ApiResponse
1	Insufficient Funds	ApiResponse
2	Less Than Minimum Transaction Value	ApiResponse
3	More Than Maximum Transaction Value	ApiResponse
4	Would Exceed Daily Transfer Limit	ApiResponse
5	Would Exceed Minimum Balance	ApiResponse
6	Unresolved Primary Party	ApiResponse
7	Unresolved Receiver Party	ApiResponse
8	Would Exceed Maximum Balance	ApiResponse
11	Debit Account Invalid	ApiResponse
12	Credit Account Invalid	ApiResponse
13	Unresolved Debit Account	ApiResponse
14	Unresolved Credit Account	ApiResponse
15	Duplicate Detected	ApiResponse
17	Internal Failure	ApiResponse
18	Initiator Credential Check Failure	ApiResponse
19	Message Sequencing Failure	ApiResponse
20	Unresolved Initiator	ApiResponse
21	Initiator to Primary Party Permission Failure	ApiResponse
22	Initiator to Receiver Party Permission Failure	ApiResponse
23	Request schema validation error	ApiResponse
24	Missing mandatory fields	ApiResponse
25	Cannot communicate with Caller	ApiResponse
26	Traffic blocking condition in place	ApiResponse
0	Success	ApiResponse
100000000	Request was cached, waiting for resending	ApiResponse
100000001	The system is overload	ApiResponse
100000002	Throttling error	ApiResponse
100000003	Exceed the limitation of the LICENSE	ApiResponse
100000004	Internal Server Error	ApiResponse
100000005	Invalid input value:%1 %1 indicates the parameter's name.	ApiResponse
100000006	SP's status is abnormal	ApiResponse
100000007	Authentication failed	ApiResponse
100000008	Service's status is abnormal	ApiResponse
100000009	API's status is abnormal	ApiResponse
100000010	Insufficient permissions	ApiResponse
100000011	Exceed the limitation of request rate	ApiResponse
100000012	Insufficient balance	ApiResponse
100000013	No route	ApiResponse
100000014	Missing mandatory parameter:%1 %1 indicates the parameter's name.	ApiResponse

The following table lists result codes and result descriptions which are provided to the third party. These may be communicated either in the synchronous *ApiResponse* message, or in the asynchronous *ApiResponse* message.

0 Success

PROJECT NAME: M-PESA	
DOCUMENT NAME: DEVELOPER'S GUIDE- B2B INTERFACE	VERSION: 0.3
COMPANY/DIVISION: PRODUCT AND SERVICE DEVELOPMENT	DATE: 24 TH APRIL 2015

This is indicated for both *ApiResponse* and *ApiResponse* messages. An *ApiResponse* value of 0 indicates that the request has passed basic validation tests and been passed on to the core system for further processing. An *ApiResponse* value of 0 means that the requested financial transaction has been completed successfully.

1 **InsufficientFunds**

Typically indicates that the primary party does not have enough money to complete the requested financial transaction. In the case of the B2C API, this means that the business organisation does not have enough money in its utility account.

This is returned by the *ApiResponse* and represented internally as a transaction reason.

2 **LessThanMinimumTransactionValue**

3 **MoreThanMaximumTransactionValue**

Each of these potential failures derive from the rules which govern MPesa financial transactions. In the case of the B2C API, these are taken from *DefaultBusinessUtilityAccount* rules, which specify a lower bound of 10 KE shillings and an upper bound of 70000. For promotion payments and salary payments to unregistered users, the upper limit is lower: 35000. Likewise, the lower bound for these 2 transactions is also different: 101 rather than 10.

These are both returned by the *ApiResponse* and represented internally as a transaction reason.

4 **WouldExceedDailyTransferLimit**

This is a limit on daily activity. For the business organisation, this is very high: 100000000 KE shillings. It is much more likely that this rule will apply to the customer, where the limit is 140000 KE shillings.

This is returned by the *ApiResponse* and represented internally as a transaction reason.

5 **WouldExceedMinimumBalance**

This rule is rather confusingly named – it actually means that a transaction would bring the business organisations utility account below the required minimum – which is currently 0.

This is returned by the *ApiResponse* and represented internally as a transaction reason. It is computed during execution of the financial transaction.

6 **UnresolvedPrimaryParty**

7 **UnresolvedReceiverParty**

The primary party or receiver party cannot be associated with an MPesa identity. For transactions (such as promotion payment and salary payment) which are supported for unregistered users, the unresolved receiver party rule is not applied.

These are returned in the *ApiResponse* and checked before the linked financial transaction is created.

8 **WouldExceedMaximumBalance**

For the B2C API, this applies to the recipient MMF customer – the limit here is 100,000 KE shillings.

PROJECT NAME: M-PESA	
DOCUMENT NAME: DEVELOPER'S GUIDE- B2B INTERFACE	VERSION: 0.3
COMPANY/DIVISION: PRODUCT AND SERVICE DEVELOPMENT	DATE: 24 TH APRIL 2015

This is returned by the *ApiResponse* and represented internally as a transaction reason. It is computed during execution of the financial transaction.

9 LessThanMinAirtimeValue

10 MoreThanMaxAirtimeValue

Neither of these apply to B2C API operations.

11 DebitAccountInvalid

12 CreditAccountInvalid

13 UnresolvedDebitAccount

14 UnresolvedCreditAccount

These are all existing failure transaction reasons for B2C financial transactions – they would be issued to the caller in the *ApiResponse* message. The latter 2 in particular are unlikely to occur, as the request would be rejected by Core API specific checks before the request reached the accounting engine.

15 DuplicateDetected

Currently, any requests which presents an originator conversation id which has been seen before will be rejected. This rule will need to be reconsidered in contexts which require multi-stage conversations or multiple Callers. This check (along with the message expiry check) is the first thing done by the transaction processor when handling an API request. The outcome is reported in the *ApiResponse* message.

16 PayUtilityInvalidAccountNumberFormat

Does not apply to the B2C API operations.

17 InternalFailure

A catch all for failures which are not identified more specifically – this can occur in either the *ApiResponse* or *ApiResponse* – although the intent is to replace any such error with a more precise message.

18 InitiatorCredentialCheckFailure

The password check for the initiator failed, either because the presented password is wrong, or something has gone wrong in the encryption or decryption steps. This is issued in the *ApiResponse* before the creation of a financial transaction.

19 ApiRequestMessageExpiryFailure

Initiators have the option to specify a request timestamp. If the gap between this value and the time at which the message is received by the transaction processor is too great, then the request is rejected. The specific interval is configured separately for each API operation (and indeed, for each API operation stage). This is the first check performed on an API request arriving at the transaction processor, and as such is included in the *ApiResponse* message.

20 UnresolvedInitiator

The initiator username presented with the request cannot be found. This is included in the *ApiResponse*.

PROJECT NAME: M-PESA	
DOCUMENT NAME: DEVELOPER'S GUIDE- B2B INTERFACE	VERSION: 0.3
COMPANY/DIVISION: PRODUCT AND SERVICE DEVELOPMENT	DATE: 24 TH APRIL 2015

21 InitiatorToPrimaryPartyPermissionFailure

The initiator presented does not have the right to issue requests for the specified primary party (as established during creation of the initiator on the admin web site). This is part of the *ApiResponse*, and computed prior to issuing a financial transaction.

22 InitiatorStatusCheckFailure

The presented initiator username can be received, but the initiator is not currently active. This fact is returned in the *ApiResponse*.

23 RequestSchemaValidationError

Incoming API requests are validated against the schema defined in *CPSInterface_Request.xsd*. This is part of the *ApiResponse* message – the details of the validation error are included in the response.

24 MissingRequestParameters

Required input parameters are defined for each type of API operation. If these are missing, then this is issued in the *ApiResponse* message. The names of the missing parameters are included in the result parameters field.

25 InvalidRequestParameters

If all required parameters are presented, then validation checks are performed. Specifically, the parameter is checked to see if it can be converted to the intended type, and then checked against (optional) configuration regular expression based validation rules. For the B2C API, only the type check (i.e the amount specified is a valid decimal) is performed. Failures are indicated in the *ApiResponse* message, with the details included in the result parameters.

26 SystemTooBusy

Included in the *ApiResponse* message if a traffic blocking condition is in place. See section 5.1 for more detail.

28 InitiatorAllowedOperationCheckFailure

Upon creation, initiators are assigned permissions for specific API operations – if the operation specified in the request message is not included in this list, then this *ApiResponse* message is received.

29 InvalidCommand

The command specified in the request is not defined – this is part of the *ApiResponse*.

30 ErrorSerializingRequest

After XML schema validation, the API attempts to convert the XML request into an internal *ApiRequest* object – any failures result in this *ApiResponse* message. The details of the exception are included.

31 InitiatorNotSpecified

The initiator username is not specified, or not specified in a way that can be parsed.

PROJECT NAME: M-PESA	
DOCUMENT NAME: DEVELOPER'S GUIDE- B2B INTERFACE	VERSION: 0.3
COMPANY/DIVISION: PRODUCT AND SERVICE DEVELOPMENT	DATE: 24 TH APRIL 2015

32 **ErrorSerializingRequest**

The presented identifier for the initiator is not a username.

33 **PrimaryPartyNotSpecified**

34 **PrimaryPartyIdentifierInvalid**

35 **ReceiverPartyNotSpecified**

36 **ReceiverPartyIdentifierInvalid**

In all these case, one of the API parties is either missing from the request, or has been presented with the wrong identifier type., This kind of failure is indicated in the *ApiResult* message.,

37 **MissingApiCommand**

No command is included in the request – in general this problem should be captured by the XML schema validation, but if it is not this *ApiResult* message is issued.

38 **InvalidConversationId**

39 **UnknownConversationId**

Not currently checked for – this will take place for multi-stage conversations.

40 **InvalidParameterDefinition**

PROJECT NAME: M-PESA	
DOCUMENT NAME: DEVELOPER'S GUIDE- B2B INTERFACE	VERSION: 0.3
COMPANY/DIVISION: PRODUCT AND SERVICE DEVELOPMENT	DATE: 24 TH APRIL 2015

Web Service Interface Definition

4.1 Interface: RequestMgrPortType

4.1.1 Operation: GenericAPIRequest

The 3rd party invokes this operation to send a B2B request

4.1.1.1 Message Header: RequestSOAPHeader

Element name	Element type	Optional	Description
SpId	xsd: string	No	SP ID. This is the Service Provider Identifier that is allocated by the Broker to the 3rd party. [Example] 000201
SpPassword	xsd: string	Yes	This is an encrypted form of the SP password issued to an SP when an account is created on the Broker. The encrypted password is a Base64 encoded string of the SHA-256 hash of the concatenation of the spId, password and the timeStamp as illustrated below: Given the following parameters spId: 601399 password: spPassword timestamp: 20130702212854 spPassword = BASE64(SHA-256(spId + Password + timeStamp)) e.g. spPassword = BASE64(SHA-256(601399spPassword20130702212854)) [Example] e6434ef249df55c7a21a0b45758a39bb

PROJECT NAME: M-PESA	
DOCUMENT NAME: DEVELOPER'S GUIDE- B2B INTERFACE	VERSION: 0.3
COMPANY/DIVISION: PRODUCT AND SERVICE DEVELOPMENT	DATE: 24 TH APRIL 2015

Element name	Element type	Optional	Description
ServiceId	xsd: string	Yes	Service ID. This is the Service Identifier that is allocated by the Broker for every service created. [Example] 3500001000012
Timestamp	xsd: string	Yes	Time stamp (UTC time). The value is required during SHA-256 encryption for spPassword. NOTE If the spPassword parameter must be set, this parameter is mandatory. [Format] yyyyMMddHHmmss [Example] 20100731064245

4.1.1.2 Input Message: RequestMsg

Element name	Element type	Optional	Description
RequestMsg	xsd: string	No	Request Message from 3rd party. Its value should be an instance of Request Type and a CDATA

Note:

1. If there is no configuration for notification URL on Broker side, which indicates the callback url for accepting notification of GenericAPIResult, the **ResultURL** parameter inside Identity tag must present.
2. If there is no configuration for notification URL on Broker side, which indicates the callback url for accepting notification of cached requests expired, the 3rd party must add a key-pair parameter into **ReferenceData** and the key is **QueueTimeoutURL**.

4.1.1.3 Output Message: ResponseMsg

Element name	Element type	Optional	Description
ResponseMsg	xsd: string	No	Response return to 3 rd party. Its value should be an instance of Response Type and a CDATA.

PROJECT NAME: M-PESA	
DOCUMENT NAME: DEVELOPER'S GUIDE- B2B INTERFACE	VERSION: 0.3
COMPANY/DIVISION: PRODUCT AND SERVICE DEVELOPMENT	DATE: 24 TH APRIL 2015

4.2 Interface: ResultMgrPortType

4.2.1 Operation: GenericAPIResult

This operation must be implemented by a Web Service at the 3rd party side if it requires notification of the final result for B2B request. It will be invoked by Broker to notify the 3rd party once Broker received the notification from Core API.

4.2.1.1 Input Message: ResultMsg

Element name	Element type	Optional	Description
ResultMsg	xsd: string	No	Request Message from Broker. Its value should be a instance of Result Type and a CDATA.

4.2.1.2 Output Message: ResponseMsg

Element name	Element type	Optional	Description
ResponseMsg	xsd: string	No	Response return to Broker. Its value should be a instance of Response Type and a CDATA.

PROJECT NAME: M-PESA	
DOCUMENT NAME: DEVELOPER'S GUIDE- B2B INTERFACE	VERSION: 0.3
COMPANY/DIVISION: PRODUCT AND SERVICE DEVELOPMENT	DATE: 24 TH APRIL 2015

4.3 Interface: QueueTimeoutNotificationPort

4.3.1 Operation: notifyQueueTimeout

This operation must be implemented by a Web Service at the 3rd party side if it requires notification of cached requests are expired. It will be invoked by Broker to notify the 3rd party once cached requests are expired.

4.3.1.1 Input Message: notifyQueueTimeout

Element name	Element type	Optional	Description
OriginatorConversationID	xsd:string		originatorConversationID from the request sent by the 3 rd party
originRequest	xsd:string	No	Original request without SOAP Header sent by 3 rd party. Its value is encoded with base64, when the 3rd party receive the request, it should decode it.
ExtensionInfo	Parameters	Yes	Extended parameters.

4.3.1.2 Output Message: notifyQueueTimeoutResponse

Element name	Element type	Optional	Description
Result	Result	No	
ExtensionInfo	Parameters	Yes	Extended parameters.

4.3.1.3 Response Code

ResponseCode	ResponseDesc
00000000	Success
00000001	Failed

PROJECT NAME: M-PESA	
DOCUMENT NAME: DEVELOPER'S GUIDE- B2B INTERFACE	VERSION: 0.3
COMPANY/DIVISION: PRODUCT AND SERVICE DEVELOPMENT	DATE: 24 TH APRIL 2015

4.4 Interface: QueryTransactionPort

4.4.1 Operation: queryTransaction

The 3rd party invokes this operation to query transaction information..

4.4.1.1 Message Header: RequestSOAPHeader

Element name	Element type	Optional	Description
SpId	xsd: string	No	SP ID. It's allocated by the Broker to the 3 rd party. [Example] 000201
spPassword	xsd: string	Yes	Encrypted authentication password for partners to access the Broker. The value is a character string encrypted from spId + Password + timeStamp by SHA-256. The encryption formula is as follows: spPassword =BASE64(SHA-256(spId + Password + timeStamp)) In the preceding formula: <ul style="list-style-type: none"> timeStamp: value of timeStamp. Password: authentication password for 3rd parties to access the Broker. The value is allocated by the Broker. NOTE The authentication modes include SPID&Password, SPID&IP&Password, and SPID&IP. When the authentication mode is SPID&Password or SPID&IP&Password, this parameter is mandatory. [Example] e6434ef249df55c7a21a0b45758a39bb
ServiceId	xsd: string	Yes	Service ID. The value is allocated by the Broker to the 3 rd party. [Example] 3500001000012

PROJECT NAME: M-PESA	
DOCUMENT NAME: DEVELOPER'S GUIDE- B2B INTERFACE	VERSION: 0.3
COMPANY/DIVISION: PRODUCT AND SERVICE DEVELOPMENT	DATE: 24 TH APRIL 2015

Element name	Element type	Optional	Description
timeStamp	xsd: string	Yes	Time stamp (UTC time). The value is required during SHA-256 encryption for spPassword . NOTE If the spPassword parameter must be set, this parameter is mandatory. [Format] yyyyMMddHHmmss [Example] 20100731064245

4.4.1.2 Input Message: queryTransaction

Element name	Element type	Optional	Description
originatorConversationID	xsd:string		The unique identifier of the request message generated by third party. It is used to identify a request between the third party and MM. Max length is 128
extensionInfo	Parameters	Yes	Extended parameters.

Table 4-1 extensionInfo Description

Parameter	Optional	Type	Description
queryDate	Yes	String(20)	The date of the original conversation. Format is yyyyMMddHHmmss, for example: 20131230134412 Note: If this parameter does not present, it will cost more time to get the result.

4.4.1.3 Output Message: queryTransactionResponse

Element name	Element type	Optional	Description
Result	Response	No	
submitApiRequestList	xsd:string[0-unbounded]	Y	Requests sent by the 3 rd party. Its value is the requests sent by the 3 rd party with base64 encoded.
submitApiResponseList	xsd:string[0-unbounded]	Y	Responses returned from the Broker. Its value is the responses returned from the Broker with base64 encoded.

PROJECT NAME: M-PESA	
DOCUMENT NAME: DEVELOPER'S GUIDE- B2B INTERFACE	VERSION: 0.3
COMPANY/DIVISION: PRODUCT AND SERVICE DEVELOPMENT	DATE: 24 TH APRIL 2015

Element name	Element type	Optional	Description
submitApiResponseList	xsd:string[0-unbounded]	Y	Results sent to the 3 rd party. Its value is the requests sent by the Broker with base64 encoded.
queueTimeOutList	xsd:string[0-unbounded]	Y	QueueTimeout requests sent to the 3 rd party. Its value is the requests sent by the Broker with base64 encoded.
extensionInfo	Parameters	Yes	Extended parameters.

4.4.1.4 Response Codes

ResponseCode	ResponseDesc
00000000	Success
10000001	The system is overload
10000002	Throttling error
10000003	Exceed the limitation of the LICENSE
10000004	Internal Server Error
10000005	Invalid input value:%1 %1 indicates the parameter's name.
10000006	SP's status is abnormal
10000007	Authentication failed
10000008	Service's status is abnormal
10000010	Insufficient permissions
10000014	Missing mandatory parameter:%1 %1 indicates the parameter's name.

4.5 Interface: Management

4.5.1 Operation: changePassword

The 3rd party invokes this operation to change his password.

Input Message: changePassword

Element name	Element type	Optional	Description
spId	xsd: string	No	SP ID. It's allocated by the SAG to the 3 rd party. [Example] 000201

PROJECT NAME: M-PESA	
DOCUMENT NAME: DEVELOPER'S GUIDE- B2B INTERFACE	VERSION: 0.3
COMPANY/DIVISION: PRODUCT AND SERVICE DEVELOPMENT	DATE: 24 TH APRIL 2015

Element name	Element type	Optional	Description
spPassword	xsd: string	Yes	<p>Encrypted authentication password for partners to access the SAG.</p> <p>The value is a character string encrypted from spId + Password + timeStamp by SHA-256. The encryption formula is as follows: spPassword =BASE64(SHA-256(spId + Password + timeStamp))</p> <p>In the preceding formula:</p> <p>timeStamp: value of timeStamp.</p> <p>Password: authentication password for 3rd parties to access the SAG. The value is allocated by the SAG.</p> <p>NOTE</p> <p>The authentication modes include SPID&Password, SPID&IP&Password, and SPID&IP. When the authentication mode is SPID&Password or SPID&IP&Password, this parameter is mandatory.</p> <p>[Example]</p> <p>e6434ef249df55c7a21a0b45758a39bb</p>
timeStamp	xsd: string	Yes	<p>Time stamp (UTC time).</p> <p>The value is required during SHA-256 encryption for spPassword.</p> <p>NOTE</p> <p>If the spPassword parameter must be set, this parameter is mandatory.</p> <p>[Format]</p> <p>yyyyMMddHHmmss</p> <p>[Example]</p> <p>20100731064245</p>

PROJECT NAME: M-PESA	
DOCUMENT NAME: DEVELOPER'S GUIDE- B2B INTERFACE	VERSION: 0.3
COMPANY/DIVISION: PRODUCT AND SERVICE DEVELOPMENT	DATE: 24 TH APRIL 2015

Element name	Element type	Optional	Description
newPassword	xsd:string	No	New authentication password for 3 rd parties to access the SAG. It should be encrypted by AES-256 and encoded with base64. Shared key and will be allocated by the SAG. For example: New password is !QAZ2wsx, Security key is AAAabcdefghijklm, Vector is abcdefghijklmnop AES(!QAZ2wsx, AAAabcdefghijklm, abcdefghijklmnop) is wi2a7BAH0QPd2LRdmcgC9w== SP should fill wi2a7BAH0QPd2LRdmcgC9w== as newPassword
extensionInfo	Parameters	Yes	Extended parameters.

Output Message: changePasswordResponse

Element name	Element type	Optional	Description
result	Result	No	Result.
extensionInfo	Parameters	Yes	Extended parameters.

Response Code

ResponseCode	ResponseDesc
000000000	Success
100000001	The system is overload
100000002	Throttling error
100000003	Exceed the limitation of the LICENSE
100000004	Internal Server Error

PROJECT NAME: M-PESA	
DOCUMENT NAME: DEVELOPER'S GUIDE- B2B INTERFACE	VERSION: 0.3
COMPANY/DIVISION: PRODUCT AND SERVICE DEVELOPMENT	DATE: 24 TH APRIL 2015

ResponseCode	ResponseDesc
100000005	Invalid input value:% 1 % 1 indicates the parameter's name.
100000006	SP's status is abnormal
100000007	Authentication failed
100000014	Missing mandatory parameter:% 1 % 1 indicates the parameter's name.

PROJECT NAME: M-PESA	
DOCUMENT NAME: DEVELOPER'S GUIDE- B2B INTERFACE	VERSION: 0.3
COMPANY/DIVISION: PRODUCT AND SERVICE DEVELOPMENT	DATE: 24 TH APRIL 2015

Transaction Types

5.1 Request Party Matrix

PROJECT NAME: M-PESA	
DOCUMENT NAME: DEVELOPER'S GUIDE- B2B INTERFACE	VERSION: 0.3
COMPANY/DIVISION: PRODUCT AND SERVICE DEVELOPMENT	DATE: 24 TH APRIL 2015

Command Types	InitiatorLinkedTo	Primary Party	Receiver Party
BusinessBuyGoods	C2B, B2C, Merchant HO and Store	Identity – C2B, B2C, Merchant HO and Store IdentifierType - 4 Identifier - ShortCode	Identity - Merchant HO and Store IdentifierType - 4 Identifier - ShortCode
BusinessPayBill	C2B, B2C, Merchant HO and Store	Identity - C2B, B2C, Merchant HO and Store IdentifierType - 4 Identifier - ShortCode	Identity - C2B Business IdentifierType - 4 Identifier - ShortCode
DisburseFundsToBusiness	B2C and C2B Business	Identity –C2B and B2C IdentifierType - 4 Identifier – ShortCode	Identity - C2B, B2C, Merchant HO and Store IdentifierType - 4 Identifier - ShortCode
BusinessToBusinessTransfer	C2B, B2C, Merchant HO and Store, Agency HO and store	Identity – C2B, B2C, Merchant HO and Store IdentifierType - 4 Identifier – ShortCode	Identity - C2B, B2C, Merchant HO and Store IdentifierType - 4 Identifier - ShortCode
BusinessTransferFromMMFToUtility	C2B, B2C	Identity –C2B and B2C IdentifierType - 4 Identifier – ShortCode	Same as Primary Party
BusinessTransferFromUtilityToMMF	C2B, B2C	Identity –C2B and B2C IdentifierType - 4 Identifier – ShortCode	Same as Primary Party

PROJECT NAME: M-PESA	
DOCUMENT NAME: DEVELOPER'S GUIDE- B2B INTERFACE	VERSION: 0.3
COMPANY/DIVISION: PRODUCT AND SERVICE DEVELOPMENT	DATE: 24 TH APRIL 2015

MerchantTransferFromMerchantToWorking	Merchant HO and Store	Identity – Merchant HO and Store IdentifierType - 4 Identifier – ShortCode	Same as Primary Party
MerchantTransferFromWorkingToMerchant	Merchant HO and Store	Identity – Merchant HO and Store IdentifierType - 4 Identifier – ShortCode	Same as Primary Party
MerchantToMerchantTransfer	Merchant HO and Store (Out of hierarchy). The short code must be the Store shortCode or HO shortcode	Identity – Merchant HO and Store IdentifierType - 4 Identifier – ShortCode	Identity – Merchant HO and Store IdentifierType - 4 Identifier – ShortCode
MerchantServicesMMFAccountTransfer	Merchant HO and Store (Within Hierachy). The short code must be the Store shortcode or HO shortcode	Identity – Merchant HO and Store IdentifierType - 4 Identifier – ShortCode	Identity – Merchant HO and Store IdentifierType - 4 Identifier – ShortCode
AgencyFloatAdvance	Agency HO and Store	Identity – Agency HO and Store IdentifierType - 4 Identifier – ShortCode	Identity – Agency HO and Store IdentifierType - 4 Identifier – ShortCode
OrgBankAccountWithdrawal	C2B, B2C, Merchant HO and Store	Identity – C2B, B2C, Merchant HO and Store IdentifierType - 4 Identifier – ShortCode	Same as Primary Party
OrgRevenueSettlement	C2B, B2C, Merchant HO and Store	Identity – C2B, B2C, Merchant HO and Store IdentifierType - 4	Same as Primary Party

PROJECT NAME: M-PESA	
DOCUMENT NAME: DEVELOPER'S GUIDE- B2B INTERFACE	VERSION: 0.3
COMPANY/DIVISION: PRODUCT AND SERVICE DEVELOPMENT	DATE: 24 TH APRIL 2015

		Identifier – ShortCode	
AccountBalance	B2C Business, C2B Business, Merchant HO, MMF Organisation	NA (0)	NA(0)
TransactionStatusQuery	B2C Business, C2B Business, Merchant HO, MMF Organisation	NA (0)	NA(0)

5.2 Business Paybill

Description		
This is a transaction type that moves money from Business customer (B2C, C2B, Merchant HO and Merchant Store organizations) to a C2B organization. The request moves money from the Primary Party's MMF/WORKING account to the Receiver party's Utility account. Primary party will be API Enabled Business Customer and receiver party will be C2B Business. The initiator would be linked to primary party.		
Input Parameters		
Amount	Decimal	
AccountReference	String	The third party account reference. (Mandatory)
Output Parameters		
ResultType	ResultType	It describes the state of the request, for single staged it would be only completed.
ResultCode	String	Result code
ResultDesc	String	Result description
ConversationId	GUID	M-Pesa conversation id
OriginatorConversationId	String	Third party conversation id
TransactionId	String	It takes the financial transaction unique receipt number.

PROJECT NAME: M-PESA	
DOCUMENT NAME: DEVELOPER'S GUIDE- B2B INTERFACE	VERSION: 0.3
COMPANY/DIVISION: PRODUCT AND SERVICE DEVELOPMENT	DATE: 24 TH APRIL 2015

ResultParameters		
Amount	Decimal	The transactional Amount Eg. <Key>Amount</Key><Value>7000.00</Value>
TransCompletedTime	DateTime	The date time when the transaction was completed. Eg. <Key>TransCompletedTime</Key> <Value>20150424170252</Value>
InitiatorAccountCurrentBalance	Decimal	Amount of money in the initiating organization. Eg. <Key>InitiatorAccountCurrentBalance</Key> <Value>{Amount={BasicAmount=2714803.00, MinimumAmount=271480300, CurrencyCode=KES}}</Value>
DebitPartyCharges	Decimal	
DebitAccountCurrentBalance	Decimal	Amount of money in the initiating organization. Eg. <Key> DebitAccountCurrentBalance </Key> <Value>{Amount={BasicAmount=2714803.00, MinimumAmount=271480300, CurrencyCode=KES}}</Value>
Currency	String	Currency used. Eg. <Key>Currency</Key> <Value>KES</Value>
DebitPartyPublicName	String	Public name of the Debit Party. Format: <Short Code>-<Organization Name>
ReceiverPartyPublicName	String	Public name of the Credit Party. Eg. <Key>ReceiverPartyPublicName</Key> <Value>888888 - KPLC TEST</Value>.
DebitPartyAffectedAccountBalance	String	Indicates the account balance of all the affected accounts of debit party. For each account, the fields are presented in the following order and separated by vertical bars (): amp; is used as the separator of different accounts.

PROJECT NAME: M-PESA	
DOCUMENT NAME: DEVELOPER'S GUIDE- B2B INTERFACE	VERSION: 0.3
COMPANY/DIVISION: PRODUCT AND SERVICE DEVELOPMENT	DATE: 24 TH APRIL 2015

		Eg. <Key>DebitPartyAffectedAccountBalance</Key> <Value>MMF Organization Account KES 2714803.00 2714803.00 0.00 50000000.00</Value>
--	--	--

5.3 Disburse Funds to Business

Description		
This is a transaction type that moves money from B2C and C2B organizations to a Business Customer (B2C, C2B, Merchant HO and Merchant Store organization). The request moves money from the Primary Party's Utility account to the Receiver party's MMF account. Primary party will be API Enabled Business Customer and receiver party will be a Business Customer. The initiator would be linked to primary party.		
Input Parameters		
Amount	Decimal	
AccountReference	String	The third party account reference. (optional)
Output Parameters		
ResultType	ResultType	It describes the state of the request, for single staged it would be only completed.
ResultCode	String	Result code
ResultDesc	String	Result description
ConversationId	GUID	M-Pesa conversation id
OriginatorConversationId	String	Third party conversation id
TransactionId	String	It takes the financial transaction unique receipt number.
ResultParameters		
Amount	Decimal	The transactional Amount Eg. <Key>Amount</Key><Value>7000.00</Value>

PROJECT NAME: M-PESA	
DOCUMENT NAME: DEVELOPER'S GUIDE- B2B INTERFACE	VERSION: 0.3
COMPANY/DIVISION: PRODUCT AND SERVICE DEVELOPMENT	DATE: 24 TH APRIL 2015

TransCompletedTime	DateTime	The date time when the transaction was completed. Eg. <Key>TransCompletedTime</Key> <Value>20150424170252</Value>
InitiatorAccountCurrentBalance	Decimal	Amount of money in the initiating organization. Eg. <Key>InitiatorAccountCurrentBalance</Key> <Value>{Amount={BasicAmount=2714803.00, MinimumAmount=271480300, CurrencyCode=KES}}</Value>
DebitPartyCharges	Decimal	
DebitAccountCurrentBalance	Decimal	Amount of money in the initiating organization. Eg. <Key> DebitAccountCurrentBalance </Key> <Value>{Amount={BasicAmount=2714803.00, MinimumAmount=271480300, CurrencyCode=KES}}</Value>
Currency	String	Currency used. Eg. <Key>Currency</Key> <Value>KES</Value>
DebitPartyPublicName	String	Public name of the Debit Party. Format: <Short Code>-<Organization Name>
ReceiverPartyPublicName	String	Public name of the Credit Party. Eg. <Key>ReceiverPartyPublicName</Key> <Value>888888 - KPLC TEST</Value>.
DebitPartyAffectedAccountBalance	String	Indicates the account balance of all the affected accounts of debit party. For each account, the fields are presented in the following order and separated by vertical bars (): amp; is used as the separator of different accounts. Eg. <Key>DebitPartyAffectedAccountBalance</Key> <Value>MMF Organization Account KES 2714803.00 2714803.00 0.00 50000000.00</Value>

PROJECT NAME: M-PESA	
DOCUMENT NAME: DEVELOPER'S GUIDE- B2B INTERFACE	VERSION: 0.3
COMPANY/DIVISION: PRODUCT AND SERVICE DEVELOPMENT	DATE: 24 TH APRIL 2015

5.4 Business Buy Goods

Description		
This is a transaction type that moves money from Business customer (B2C, C2B, Merchant HO and Merchant Store organizations) to a Merchant HO or Store. The request moves money from the Primary Party's MMF/WORKING account to the Receiver party's Merchant account. Primary party will be API Enabled Business Customer and receiver party will be Merchant HO and Store Business. The initiator would be linked to primary party.		
Input Parameters		
Amount	Decimal	
AccountReference	String	The third party account reference. (optional)
Output Parameters		
ResultType	ResultType	It describes the state of the request, for single staged it would be only completed.
ResultCode	String	Result code
ResultDesc	String	Result description
ConversationId	GUID	M-Pesa conversation id
OriginatorConversationId	String	Third party conversation id
TransactionId	String	It takes the financial transaction unique receipt number.
ResultParameters		
Amount	Decimal	The transactional Amount Eg. <Key>Amount</Key><Value>7000.00</Value>
TransCompletedTime	DateTime	The date time when the transaction was completed. Eg. <Key>TransCompletedTime</Key><Value>20150424170252</Value>
InitiatorAccountCurrentBalance	Decimal	Amount of money in the initiating organization.

PROJECT NAME: M-PESA	
DOCUMENT NAME: DEVELOPER'S GUIDE- B2B INTERFACE	VERSION: 0.3
COMPANY/DIVISION: PRODUCT AND SERVICE DEVELOPMENT	DATE: 24 TH APRIL 2015

		Eg. <Key>InitiatorAccountCurrentBalance</Key> <Value>{Amount={BasicAmount=2714803.00, MinimumAmount=271480300, CurrencyCode=KES}}</Value>
DebitPartyCharges	Decimal	
DebitAccountCurrentBalance	Decimal	Amount of money in the initiating organization. Eg. <Key> DebitAccountCurrentBalance </Key> <Value>{Amount={BasicAmount=2714803.00, MinimumAmount=271480300, CurrencyCode=KES}}</Value>
Currency	String	Currency used. Eg. <Key>Currency</Key> <Value>KES</Value>
DebitPartyPublicName	String	Public name of the Debit Party. Format: <Short Code>-<Organization Name>
ReceiverPartyPublicName	String	Public name of the Credit Party. Eg. <Key>ReceiverPartyPublicName</Key> <Value>888888 - KPLC TEST</Value>.
DebitPartyAffectedAccountBalance	String	Indicates the account balance of all the affected accounts of debit party. For each account, the fields are presented in the following order and separated by vertical bars (): amp; is used as the separator of different accounts. Eg. <Key>DebitPartyAffectedAccountBalance</Key> <Value>MMF Organization Account KES 2714803.00 2714803.00 0.00 50000000.00</Value>

5.5 BusinessToBusinessTransfer

Description

PROJECT NAME: M-PESA	
DOCUMENT NAME: DEVELOPER'S GUIDE- B2B INTERFACE	VERSION: 0.3
COMPANY/DIVISION: PRODUCT AND SERVICE DEVELOPMENT	DATE: 24 TH APRIL 2015

This is a transaction type that moves money from an Organization with an MMF/WORKING account (B2C, C2B, Merchant HO and store and Agency HO and Store) to an organization with an MMF/WORKING account (B2C, C2B, Merchant HO and store and Agency HO and Store). The organizations should not be in the same Hierarchy. The request moves money from the Primary Party's MMF/WORKING account to the Receiver party's MMF/WORKING account. Primary party should be API Enabled Business Customer and receiver party will be an Organization. The initiator would be linked to primary party.

Input Parameters

Amount	Decimal	
AccountReference	String	The third party account reference. (optional)

Output Parameters

ResultType	ResultType	It describes the state of the request, for single staged it would be only completed.
ResultCode	String	Result code
ResultDesc	String	Result description
ConversationId	GUID	M-Pesa conversation id
OriginatorConversationId	String	Third party conversation id
TransactionId	String	It takes the financial transaction unique receipt number.

ResultParameters

Amount	Decimal	The transactional Amount Eg. <Key>Amount</Key><Value>7000.00</Value>
TransCompletedTime	DateTime	The date time when the transaction was completed. Eg. <Key>TransCompletedTime</Key> <Value>20150424170252</Value>
InitiatorAccountCurrentBalance	Decimal	Amount of money in the initiating organization. Eg. <Key>InitiatorAccountCurrentBalance</Key> <Value>{Amount={BasicAmount=2714803.00,

PROJECT NAME: M-PESA	
DOCUMENT NAME: DEVELOPER'S GUIDE- B2B INTERFACE	VERSION: 0.3
COMPANY/DIVISION: PRODUCT AND SERVICE DEVELOPMENT	DATE: 24 TH APRIL 2015

		MinimumAmount=271480300, CurrencyCode=KES}}</Value>
DebitPartyCharges	Decimal	
DebitAccountCurrentBalance	Decimal	Amount of money in the initiating organization. Eg. <Key> DebitAccountCurrentBalance </Key> <Value>{Amount={BasicAmount=2714803.00, MinimumAmount=271480300, CurrencyCode=KES}}</Value>
Currency	String	Currency used. Eg. <Key>Currency</Key> <Value>KES</Value>
DebitPartyPublicName	String	Public name of the Debit Party. Format: <Short Code>-<Organization Name>
ReceiverPartyPublicName	String	Public name of the Credit Party. Eg. <Key>ReceiverPartyPublicName</Key> <Value>888888 - KPLC TEST</Value>.
DebitPartyAffectedAccountBalance	String	Indicates the account balance of all the affected accounts of debit party. For each account, the fields are presented in the following order and separated by vertical bars (): amp; is used as the separator of different accounts. Eg. <Key>DebitPartyAffectedAccountBalance</Key> <Value>MMF Organization Account KES 2714803.00 2714803.00 0.00 50000000.00</Value>

5.6 BusinessTransferFromMMFTToUtility

Description
This is a transaction type that moves money within an Organization (C2B and B2C). The request moves money from the organization's MMF/WORKING account to the organization's Utility account. The organization should be API Enabled Business Customer. The initiator would be linked to primary party.

PROJECT NAME: M-PESA	
DOCUMENT NAME: DEVELOPER'S GUIDE- B2B INTERFACE	VERSION: 0.3
COMPANY/DIVISION: PRODUCT AND SERVICE DEVELOPMENT	DATE: 24 TH APRIL 2015

Input Parameters		
Amount	Decimal	
AccountReference	String	The third party account reference. (optional)
Output Parameters		
ResultType	ResultType	It describes the state of the request, for single staged it would be only completed.
ResultCode	String	Result code
ResultDesc	String	Result description
ConversationId	GUID	M-Pesa conversation id
OriginatorConversationId	String	Third party conversation id
TransactionId	String	It takes the financial transaction unique receipt number.
ResultParameters		
Amount	Decimal	The transactional Amount Eg. <Key>Amount</Key><Value>7000.00</Value>
TransCompletedTime	DateTime	The date time when the transaction was completed. Eg. <Key>TransCompletedTime</Key> <Value>20150424170252</Value>
InitiatorAccountCurrentBalance	Decimal	Amount of money in the initiating organization. Eg. <Key>InitiatorAccountCurrentBalance</Key> <Value>{Amount={BasicAmount=2714803.00, MinimumAmount=271480300, CurrencyCode=KES}}</Value>
DebitPartyCharges	Decimal	
DebitAccountCurrentBalance	Decimal	Amount of money in the initiating organization.

PROJECT NAME: M-PESA	
DOCUMENT NAME: DEVELOPER'S GUIDE- B2B INTERFACE	VERSION: 0.3
COMPANY/DIVISION: PRODUCT AND SERVICE DEVELOPMENT	DATE: 24 TH APRIL 2015

		Eg. <Key> DebitAccountCurrentBalance </Key> <Value>{Amount={BasicAmount=2714803.00, MinimumAmount=271480300, CurrencyCode=KES}} </Value>
Currency	String	Currency used. Eg. <Key>Currency</Key> <Value>KES</Value>
DebitPartyPublicName	String	Public name of the Debit Party. Format: <Short Code>-<Organization Name>
ReceiverPartyPublicName	String	Public name of the Credit Party. Eg. <Key>ReceiverPartyPublicName</Key> <Value>888888 - KPLC TEST</Value>.
DebitPartyAffectedAccountBalance	String	Indicates the account balance of all the affected accounts of debit party. For each account, the fields are presented in the following order and separated by vertical bars (): amp; is used as the separator of different accounts. Eg. <Key>DebitPartyAffectedAccountBalance</Key> <Value>MMF Organization Account KES 2714803.00 2714803.00 0.00 50000000.00</Value>

5.7 BusinessTransferFromUtilityToMMF

Description		
This is a transaction type that moves money within an Organization (C2B and B2C). The request moves money from the organization's Utility account to the organization's MMF/WORKING account. The organization should be API Enabled Business Customer. The initiator would be linked to primary party.		
Input Parameters		
Amount	Decimal	
AccountReference	String	The third party account reference. (optional)

PROJECT NAME: M-PESA	
DOCUMENT NAME: DEVELOPER'S GUIDE- B2B INTERFACE	VERSION: 0.3
COMPANY/DIVISION: PRODUCT AND SERVICE DEVELOPMENT	DATE: 24 TH APRIL 2015

Output Parameters		
ResultType	ResultType	It describes the state of the request, for single staged it would be only completed.
ResultCode	String	Result code
ResultDesc	String	Result description
ConversationId	GUID	M-Pesa conversation id
OriginatorConversationId	String	Third party conversation id
TransactionId	String	It takes the financial transaction unique receipt number.
ResultParameters		
Amount	Decimal	The transactional Amount Eg. <Key>Amount</Key><Value>7000.00</Value>
TransCompletedTime	DateTime	The date time when the transaction was completed. Eg. <Key>TransCompletedTime</Key> <Value>20150424170252</Value>
InitiatorAccountCurrentBalance	Decimal	Amount of money in the initiating organization. Eg. <Key>InitiatorAccountCurrentBalance</Key> <Value>{Amount={BasicAmount=2714803.00, MinimumAmount=271480300, CurrencyCode=KES}}</Value>
DebitPartyCharges	Decimal	
DebitAccountCurrentBalance	Decimal	Amount of money in the initiating organization. Eg. <Key> DebitAccountCurrentBalance </Key> <Value>{Amount={BasicAmount=2714803.00, MinimumAmount=271480300, CurrencyCode=KES}}</Value>
Currency	String	Currency used. Eg. <Key>Currency</Key>

PROJECT NAME: M-PESA	
DOCUMENT NAME: DEVELOPER'S GUIDE- B2B INTERFACE	VERSION: 0.3
COMPANY/DIVISION: PRODUCT AND SERVICE DEVELOPMENT	DATE: 24 TH APRIL 2015

		<Value>KES</Value>
DebitPartyPublicName	String	Public name of the Debit Party. Format: <Short Code>-<Organization Name>
ReceiverPartyPublicName	String	Public name of the Credit Party. Eg. <Key>ReceiverPartyPublicName</Key> <Value>888888 - KPLC TEST</Value>.
DebitPartyAffectedAccountBalance	String	Indicates the account balance of all the affected accounts of debit party. For each account, the fields are presented in the following order and separated by vertical bars (): amp; is used as the separator of different accounts. Eg. <Key>DebitPartyAffectedAccountBalance</Key> <Value>MMF Organization Account KES 2714803.00 2714803.00 0.00 50000000.00</Value>

5.8 MerchantToMerchantTransfer

Description		
This is a transaction type that moves money from an Organization with Merchant account (Merchant HO and store) to an organization with a Merchant account (Merchant HO and store). The organizations should not be in the same Hierarchy. The request moves money from the Primary Party's Merchant account to the Receiver party's Merchant account. Primary party should be API Enabled Business Customer and receiver party will be an Organization. The initiator would be linked to primary party.		
Input Parameters		
Amount	Decimal	
AccountReference	String	The third party account reference. (optional)
Output Parameters		
ResultType	ResultType	It describes the state of the request, for single staged it would be only completed.

PROJECT NAME: M-PESA	
DOCUMENT NAME: DEVELOPER'S GUIDE- B2B INTERFACE	VERSION: 0.3
COMPANY/DIVISION: PRODUCT AND SERVICE DEVELOPMENT	DATE: 24 TH APRIL 2015

ResultCode	String	Result code
ResultDesc	String	Result description
ConversationId	GUID	M-Pesa conversation id
OriginatorConversationId	String	Third party conversation id
TransactionId	String	It takes the financial transaction unique receipt number.
ResultParameters		
Amount	Decimal	The transactional Amount Eg. <Key>Amount</Key><Value>7000.00</Value>
TransCompletedTime	DateTime	The date time when the transaction was completed. Eg. <Key>TransCompletedTime</Key> <Value>20150424170252</Value>
InitiatorAccountCurrentBalance	Decimal	Amount of money in the initiating organization. Eg. <Key>InitiatorAccountCurrentBalance</Key> <Value>{Amount={BasicAmount=2714803.00, MinimumAmount=271480300, CurrencyCode=KES}}</Value>
DebitPartyCharges	Decimal	
DebitAccountCurrentBalance	Decimal	Amount of money in the initiating organization. Eg. <Key> DebitAccountCurrentBalance </Key> <Value>{Amount={BasicAmount=2714803.00, MinimumAmount=271480300, CurrencyCode=KES}}</Value>
Currency	String	Currency used. Eg. <Key>Currency</Key> <Value>KES</Value>
DebitPartyPublicName	String	Public name of the Debit Party. Format: <Short Code>-<Organization Name>

PROJECT NAME: M-PESA	
DOCUMENT NAME: DEVELOPER'S GUIDE- B2B INTERFACE	VERSION: 0.3
COMPANY/DIVISION: PRODUCT AND SERVICE DEVELOPMENT	DATE: 24 TH APRIL 2015

ReceiverPartyPublicName	String	Public name of the Credit Party. Eg. <Key>ReceiverPartyPublicName</Key> <Value>888888 - KPLC TEST</Value>.
DebitPartyAffectedAccountBalance	String	Indicates the account balance of all the affected accounts of debit party. For each account, the fields are presented in the following order and separated by vertical bars (): amp; is used as the separator of different accounts. Eg. <Key>DebitPartyAffectedAccountBalance</Key> <Value>MMF Organization Account KES 2714803.00 2714803.00 0.00 50000000.00</Value>

5.9 MerchantTransferFromMerchantToWorking

Description		
This is a transaction type that moves money within an Organization (Merchant HO and Store). The request moves money from the organization's Merchant account to the organization's MMF/WORKING account. The organization should be API Enabled Business Customer. The initiator would be linked to primary party.		
Input Parameters		
Amount	Decimal	
AccountReference	String	The third party account reference. (optional)
Output Parameters		
ResultType	ResultType	It describes the state of the request, for single staged it would be only completed.
ResultCode	String	Result code
ResultDesc	String	Result description
ConversationId	GUID	M-Pesa conversation id

PROJECT NAME: M-PESA	
DOCUMENT NAME: DEVELOPER'S GUIDE- B2B INTERFACE	VERSION: 0.3
COMPANY/DIVISION: PRODUCT AND SERVICE DEVELOPMENT	DATE: 24 TH APRIL 2015

OriginatorConversationId	String	Third party conversation id
TransactionId	String	It takes the financial transaction unique receipt number.
ResultParameters		
Amount	Decimal	The transactional Amount Eg. <Key>Amount</Key><Value>7000.00</Value>
TransCompletedTime	DateTime	The date time when the transaction was completed. Eg. <Key>TransCompletedTime</Key> <Value>20150424170252</Value>
InitiatorAccountCurrentBalance	Decimal	Amount of money in the initiating organization. Eg. <Key>InitiatorAccountCurrentBalance</Key> <Value>{Amount={BasicAmount=2714803.00, MinimumAmount=271480300, CurrencyCode=KES}}</Value>
DebitPartyCharges	Decimal	
DebitAccountCurrentBalance	Decimal	Amount of money in the initiating organization. Eg. <Key> DebitAccountCurrentBalance </Key> <Value>{Amount={BasicAmount=2714803.00, MinimumAmount=271480300, CurrencyCode=KES}}</Value>
Currency	String	Currency used. Eg. <Key>Currency</Key> <Value>KES</Value>
DebitPartyPublicName	String	Public name of the Debit Party. Format: <Short Code>-<Organization Name>
ReceiverPartyPublicName	String	Public name of the Credit Party. Eg. <Key>ReceiverPartyPublicName</Key> <Value>888888 - KPLC TEST</Value>.
DebitPartyAffectedAccountBalance	String	Indicates the account balance of all the affected accounts of debit party.

PROJECT NAME: M-PESA	
DOCUMENT NAME: DEVELOPER'S GUIDE- B2B INTERFACE	VERSION: 0.3
COMPANY/DIVISION: PRODUCT AND SERVICE DEVELOPMENT	DATE: 24 TH APRIL 2015

		<p>For each account, the fields are presented in the following order and separated by vertical bars ():</p> <p>amp; is used as the separator of different accounts.</p> <p>Eg. <Key>DebitPartyAffectedAccountBalance</Key></p> <p><Value>MMF Organization Account KES 2714803.00 2714803.00 0.00 50000000.00</Value></p>
--	--	--

5.10 MerchantTransferFromWorkingToMerchant

Description		
<p>This is a transaction type that moves money within an Organization (Merchant HO and Store). The request moves money from the organization's MMF/WORKING account to the organization's Merchant account. The organization should be API Enabled Business Customer. The initiator would be linked to primary party.</p>		
Input Parameters		
Amount	Decimal	
AccountReference	String	The third party account reference. (optional)
Output Parameters		
ResultType	ResultType	It describes the state of the request, for single staged it would be only completed.
ResultCode	String	Result code
ResultDesc	String	Result description
ConversationId	GUID	M-Pesa conversation id
OriginatorConversationId	String	Third party conversation id
TransactionId	String	It takes the financial transaction unique receipt number.
ResultParameters		
Amount	Decimal	The transactional Amount

PROJECT NAME: M-PESA	
DOCUMENT NAME: DEVELOPER'S GUIDE- B2B INTERFACE	VERSION: 0.3
COMPANY/DIVISION: PRODUCT AND SERVICE DEVELOPMENT	DATE: 24 TH APRIL 2015

		Eg. <Key>Amount</Key><Value>7000.00</Value>
TransCompletedTime	DateTime	The date time when the transaction was completed. Eg. <Key>TransCompletedTime</Key> <Value>20150424170252</Value>
InitiatorAccountCurrentBalance	Decimal	Amount of money in the initiating organization. Eg. <Key>InitiatorAccountCurrentBalance</Key> <Value>{Amount={BasicAmount=2714803.00, MinimumAmount=271480300, CurrencyCode=KES}}</Value>
DebitPartyCharges	Decimal	
DebitAccountCurrentBalance	Decimal	Amount of money in the initiating organization. Eg. <Key> DebitAccountCurrentBalance </Key> <Value>{Amount={BasicAmount=2714803.00, MinimumAmount=271480300, CurrencyCode=KES}}</Value>
Currency	String	Currency used. Eg. <Key>Currency</Key> <Value>KES</Value>
DebitPartyPublicName	String	Public name of the Debit Party. Format: <Short Code>-<Organization Name>
ReceiverPartyPublicName	String	Public name of the Credit Party. Eg. <Key>ReceiverPartyPublicName</Key> <Value>888888 - KPLC TEST</Value>.
DebitPartyAffectedAccountBalance	String	Indicates the account balance of all the affected accounts of debit party. For each account, the fields are presented in the following order and separated by vertical bars (): amp; is used as the separator of different accounts. Eg. <Key>DebitPartyAffectedAccountBalance</Key> <Value>MMF Organization Account KES 2714803.00 2714803.00 0.00 50000000.00</Value>

PROJECT NAME: M-PESA	
DOCUMENT NAME: DEVELOPER'S GUIDE- B2B INTERFACE	VERSION: 0.3
COMPANY/DIVISION: PRODUCT AND SERVICE DEVELOPMENT	DATE: 24 TH APRIL 2015

5.11 OrgBankAccountWithdrawal

Description		
This is a transaction type that moves money from an Organization (C2B, B2C, Agency and Merchant) to the Bank. The request removes e-value from the MMF/Working account to the SP holding account. The organization should be API Enabled Business Customer. The initiator would be linked to primary party.		
Input Parameters		
Amount	decimal	Value to be transferred
HeadOffice	String	Optional
Output Parameters		
ResultType	ResultType	It describes the state of the request, for single staged it would be only completed.
ResultCode	String	Result code
ResultDesc	String	Result description
ConversationId	GUID	M-Pesa conversation id
OriginatorConversationId	String	Third party conversation id
TransactionId	String	It takes the financial transaction unique receipt number.
ResultParameters		
Amount	Decimal	The transactional Amount Eg. <Key>Amount</Key><Value>7000.00</Value>
TransCompletedTime	DateTime	The date time when the transaction was completed. Eg. <Key>TransCompletedTime</Key> <Value>20150424170252</Value>
DebitPartyAffectedAccountBalance	String	Indicates the account balance of all the affected accounts of debit party.

PROJECT NAME: M-PESA	
DOCUMENT NAME: DEVELOPER'S GUIDE- B2B INTERFACE	VERSION: 0.3
COMPANY/DIVISION: PRODUCT AND SERVICE DEVELOPMENT	DATE: 24 TH APRIL 2015

		<p>For each account, the fields are presented in the following order and separated by vertical bars ():</p> <p>amp; is used as the separator of different accounts.</p> <p>Eg. <Key>DebitPartyAffectedAccountBalance</Key></p> <p><Value>MMF Organization Account KES 2714803.00 2714803.00 0.00 50000000.00</Value></p>
--	--	--

5.12 OrgRevenueSettlement

Description		
<p>This is a transaction type that moves money within an Organization (C2B and Merchant). The request settles the charges accrued and moves the rest of the money to the MMF/Working account. The organization should be API Enabled Business Customer. The initiator would be linked to primary party.</p>		
Input Parameters		
HeadOffice	String	Optional
Output Parameters		
ResultType	ResultType	It describes the state of the request, for single staged it would be only completed.
ResultCode	String	Result code
ResultDesc	String	Result description
ConversationId	GUID	M-Pesa conversation id
OriginatorConversationId	String	Third party conversation id
TransactionId	String	It takes the financial transaction unique receipt number.
ResultParameters		
FundsMovement	Decimal	<p>Describes the Fund movement.</p> <p>Eg. <Key>FundsMovement</Key></p>

PROJECT NAME: M-PESA	
DOCUMENT NAME: DEVELOPER'S GUIDE- B2B INTERFACE	VERSION: 0.3
COMPANY/DIVISION: PRODUCT AND SERVICE DEVELOPMENT	DATE: 24 TH APRIL 2015

		<Value>Merchant Account Organization Settlement Account KES 0.00&Organization Settlement Account Charges Paid Account KES 0.00&Working Account Organization Settlement Account KES 0.00</Value>
TransCompletedTime	DateTime	The date time when the transaction was completed. Eg. <Key>TransCompletedTime</Key> <Value>20150424170252</Value>
AccountBalanceAfterSettlement	Decimal	Amount of money in the organization. Eg. <Key>AccountBalanceAfterSettlement</Key> <Value>Working Account KES 56.03 56.03 0.00 0.00&Utility Account KES 0.00 0.00 0.00 0.00&Charges Paid Account KES 0.00 0.00 0.00 0.00&Merchant Account KES 0.00 0.00 0.00 0.00&Organization Settlement Account KES 0.00 0.00 0.00 0.00</Value>
SettlementPlanID	Decimal	This field gives the settlementID. Eg. <Key>SettlementPlanID</Key> <Value>172110</Value>

5.13 MerchantServicesMMFAccountTransfer

Description		
This is a transaction type that moves money from an Organization with Merchant account (Merchant HO and store) to an organization with a Merchant account (Merchant HO and store). The organizations should be in the same Hierarchy. The request moves money from the Primary Party's Merchant account to the Receiver party's Merchant account. Primary party should be API Enabled Business Customer and receiver party will be an Organization. The initiator would be linked to primary party.		
Input Parameters		
Amount	Decimal	
AccountReference	String	The third party account reference. (optional)
Output Parameters		

PROJECT NAME: M-PESA	
DOCUMENT NAME: DEVELOPER'S GUIDE- B2B INTERFACE	VERSION: 0.3
COMPANY/DIVISION: PRODUCT AND SERVICE DEVELOPMENT	DATE: 24 TH APRIL 2015

ResultType	ResultType	It describes the state of the request, for single staged it would be only completed.
ResultCode	String	Result code
ResultDesc	String	Result description
ConversationId	GUID	M-Pesa conversation id
OriginatorConversationId	String	Third party conversation id
TransactionId	String	It takes the financial transaction unique receipt number.
ResultParameters		
Amount	Decimal	The transactional Amount Eg. <Key>Amount</Key><Value>7000.00</Value>
TransCompletedTime	DateTime	The date time when the transaction was completed. Eg. <Key>TransCompletedTime</Key> <Value>20150424170252</Value>
InitiatorAccountCurrentBalance	Decimal	Amount of money in the initiating organization. Eg. <Key>InitiatorAccountCurrentBalance</Key> <Value>{Amount={BasicAmount=2714803.00, MinimumAmount=271480300, CurrencyCode=KES}}</Value>
DebitPartyCharges	Decimal	
DebitAccountCurrentBalance	Decimal	Amount of money in the initiating organization. Eg. <Key> DebitAccountCurrentBalance </Key> <Value>{Amount={BasicAmount=2714803.00, MinimumAmount=271480300, CurrencyCode=KES}}</Value>
Currency	String	Currency used. Eg. <Key>Currency</Key> <Value>KES</Value>

PROJECT NAME: M-PESA	
DOCUMENT NAME: DEVELOPER'S GUIDE- B2B INTERFACE	VERSION: 0.3
COMPANY/DIVISION: PRODUCT AND SERVICE DEVELOPMENT	DATE: 24 TH APRIL 2015

DebitPartyPublicName	String	Public name of the Debit Party. Format: <Short Code>-<Organization Name>
ReceiverPartyPublicName	String	Public name of the Credit Party. Eg. <Key>ReceiverPartyPublicName</Key> <Value>888888 - KPLC TEST</Value>.
DebitPartyAffectedAccountBalance	String	Indicates the account balance of all the affected accounts of debit party. For each account, the fields are presented in the following order and separated by vertical bars (): amp; is used as the separator of different accounts. Eg. <Key>DebitPartyAffectedAccountBalance</Key> <Value>MMF Organization Account KES 2714803.00 2714803.00 0.00 50000000.00</Value>

5.14 AgencyFloatAdvance

Description		
This is a transaction type that moves money from an Organization with a Float account (Agency HO and store) to an organization with a Float account (Agency HO and store). The organizations should not be in the same Hierarchy. The request moves money from the Primary Party's Float account to the Receiver party's Float account. Primary party should be API Enabled Business Customer and receiver party will be an Organization. The initiator would be linked to primary party.		
Input Parameters		
Amount	Decimal	
AccountReference	String	The third party account reference. (optional)
Output Parameters		
ResultType	ResultType	It describes the state of the request, for single staged it would be only completed.
ResultCode	String	Result code

PROJECT NAME: M-PESA	
DOCUMENT NAME: DEVELOPER'S GUIDE- B2B INTERFACE	VERSION: 0.3
COMPANY/DIVISION: PRODUCT AND SERVICE DEVELOPMENT	DATE: 24 TH APRIL 2015

ResultDesc	String	Result description
ConversationId	GUID	M-Pesa conversation id
OriginatorConversationId	String	Third party conversation id
TransactionId	String	It takes the financial transaction unique receipt number.
ResultParameters		
Amount	Decimal	The transactional Amount Eg. <Key>Amount</Key><Value>7000.00</Value>
TransCompletedTime	DateTime	The date time when the transaction was completed. Eg. <Key>TransCompletedTime</Key> <Value>20150424170252</Value>
InitiatorAccountCurrentBalance	Decimal	Amount of money in the initiating organization. Eg. <Key>InitiatorAccountCurrentBalance</Key> <Value>{Amount={BasicAmount=2714803.00, MinimumAmount=271480300, CurrencyCode=KES}}</Value>
DebitPartyCharges	Decimal	
DebitAccountCurrentBalance	Decimal	Amount of money in the initiating organization. Eg. <Key> DebitAccountCurrentBalance </Key> <Value>{Amount={BasicAmount=2714803.00, MinimumAmount=271480300, CurrencyCode=KES}}</Value>
Currency	String	Currency used. Eg. <Key>Currency</Key> <Value>KES</Value>
DebitPartyPublicName	String	Public name of the Debit Party. Format: <Short Code>-<Organization Name>
ReceiverPartyPublicName	String	Public name of the Credit Party. Eg. <Key>ReceiverPartyPublicName</Key>

PROJECT NAME: M-PESA	
DOCUMENT NAME: DEVELOPER'S GUIDE- B2B INTERFACE	VERSION: 0.3
COMPANY/DIVISION: PRODUCT AND SERVICE DEVELOPMENT	DATE: 24 TH APRIL 2015

		<Value>888888 - KPLC TEST</Value>.
DebitPartyAffectedAccountBalance	String	<p>Indicates the account balance of all the affected accounts of debit party.</p> <p>For each account, the fields are presented in the following order and separated by vertical bars ():</p> <p>amp; is used as the separator of different accounts.</p> <p>Eg. <Key>DebitPartyAffectedAccountBalance</Key></p> <p><Value>MMF Organization Account KES 2714803.00 2714803.00 0.00 500000000.00</Value></p>

5.15 Balance Query from the Business Customer

Description		
This is a new request to check a Balance for the associated Business Customer. In case the initiator is associated to the Merchant HO, it can request a balance query of merchant store within the hierarchy. No financial transaction would be created. It will just respond back with the balance within the account at the time of request.		
Input Parameters		
ShortCode	Integer	The short code associated to the business or store.
OrgShortCodeList	String	<p>List of short code of the organizations whose balances need to be checked. Each short code must be delimited by ;</p> <p>The total number of short codes in the list must not exceed the Maximum configured in the system.(Optional)</p>
AccountType	String	<p>The account type alias in the M-Pesa system for querying balance.</p> <p>If this parameter is absent, the balance of all accounts will be returned in the Result. (Optional)</p>

PROJECT NAME: M-PESA	
DOCUMENT NAME: DEVELOPER'S GUIDE- B2B INTERFACE	VERSION: 0.3
COMPANY/DIVISION: PRODUCT AND SERVICE DEVELOPMENT	DATE: 24 TH APRIL 2015

Output Parameters		
ResultType	ResultType	It describes the state of the request, for single staged it would be only completed.
ResultCode	String	Response code
ResultDescription	String	Response description
ConversationId	GUID	M-Pesa conversation id
OriginatorConversationId	String	Third party conversation id
ResultParameters		
ShortCode	String	The organisation short code for which the balance request is performed
OrganisationName	String	The organisation name associated to the short code.
Account Balance SetTime	DateTime	The date time when the balance was last updated.
Account Number	String	The M-Pesa generated account number which can be viewed on the identity page.
Working Account Available Funds	Decimal	Mmf account available balance.
Working Account Uncleared Funds	Decimal	Mmf account uncleared balance.
Working Account Reserved Funds	Decimal	Mmf account reserved balance.
Charges Paid Account Available Funds	Decimal	Charge paid account available balance
Charges Paid Account Uncleared Funds	Decimal	Charge paid account uncleared balance
Charges Paid Account Reserved Funds	Decimal	Charge paid account reserved balance

PROJECT NAME: M-PESA	
DOCUMENT NAME: DEVELOPER'S GUIDE- B2B INTERFACE	VERSION: 0.3
COMPANY/DIVISION: PRODUCT AND SERVICE DEVELOPMENT	DATE: 24 TH APRIL 2015

Utility Account Available Funds	Decimal	Utility account available balance
Utility Account Uncleared Funds	Decimal	Utility account uncleared balance
Utility Account Reserved Funds	Decimal	Utility account reserved balance
BOCompletedTime	String	<p>The data time when the business operation was completed, as recorded in the M-Pesa system.</p> <p>Format: <i>YYYYMMDDhhmmss</i></p>
AccountBalance	String	<p>Indicates the accounts balance of organizations to be queried.</p> <p>For each account, the fields are presented in the following order and separated by vertical bars ():</p> <p>Format: <Account Type Alias> <Currency> <Current Balance> <Available Balance> <Reserved Balance> <Unclear Balance></p> <p>& is used as the separator of different accounts.</p> <p>For each organization, a short code will be added before the accounts, separated by vertical bars ():</p> <p>Format: <Shot Code> <Account 1 Balance> <Account 2 Balance> ...</p> <p>#; is used as the separator of a different organization</p> <p>In case, when failed to query one of the organization, such as:</p> <ul style="list-style-type: none"> ✓ No organization is found by the organization short code ✓ This organization is not a sub-organization of the initiator <p>The system will return:</p> <p>Format: <Shot Code> Failed</p>

PROJECT NAME: M-PESA	
DOCUMENT NAME: DEVELOPER'S GUIDE- B2B INTERFACE	VERSION: 0.3
COMPANY/DIVISION: PRODUCT AND SERVICE DEVELOPMENT	DATE: 24 TH APRIL 2015

5.16 Transaction Status Query

Description		
It is a new request to make a transaction status inquiry. All the initiator or caller can perform this request to check the transaction status of the already performed request.		
Input Parameters		
OriginatorConversationID	String	Pass one of these parameter to search for the transaction. In case the transaction is older than 15 days use only ReceiptNumber to search for the transaction status. It wont return any result in case OriginatorConversationID or ConversationID is used.
ConversationID	String	Pass one of these parameter to search for the transaction. In case the transaction is older than 15 days use only ReceiptNumber to search for the transaction status. It wont return any result in case OriginatorConversationID or ConversationID is used.
ReceiptNumber	String	Pass one of these parameter to search for the transaction. In case the transaction is older than 15 days use only ReceiptNumber to search for the transaction status. It wont return any result in case OriginatorConversationID or ConversationID is used.
Output Parameters		
ResultType	ResultType	It mentions the state of the transaction. If successfully done it would say Completed
ResultCode	string	Response code
ResultDescription	String	Response description
ConversationId	GUID	M-Pesa conversation id
OriginatorConversationId	String	Third party conversation id

PROJECT NAME: M-PESA	
DOCUMENT NAME: DEVELOPER'S GUIDE- B2B INTERFACE	VERSION: 0.3
COMPANY/DIVISION: PRODUCT AND SERVICE DEVELOPMENT	DATE: 24 TH APRIL 2015

ResultParameters		
InitiatedTime	Datetime	Transaction initiated Time.
FinalisedTime	Datetime	Transaction Finalised Time
TransactionType	String	Transaction type associated to the receipt number
ReceiptNo	String	Transaction ReceiptNo
TransactionStatus	String	Transaction status outcome
TransactionReason	String	Transaction reason in case of decline
DebitPartyName	String	Debit party identity name
CreditPartyName	String	Credit party identity name
DebitAccountType	String	Debit party account type
DebitAccountBalance	Decimal	Debit party account balance
ReasonType	String	
Originator Conversation ID	String	
Conversation ID	String	
Amount	String	
DebitPartyCharges	String	
CreditPartyCharges	String	

PROJECT NAME: M-PESA	
DOCUMENT NAME: DEVELOPER'S GUIDE- B2B INTERFACE	VERSION: 0.3
COMPANY/DIVISION: PRODUCT AND SERVICE DEVELOPMENT	DATE: 24 TH APRIL 2015

Example


6.1 B2B Transactions

This scenario will apply for all the typical B2B transactions described. They include;

- BusinessBuyGoods
- BusinessPayBill
- DisburseFundsToBusiness
- BusinessToBusinessTransfer
- BusinessTransferFromMMFTToUtility
- BusinessTransferFromUtilityToMMF
- MerchantToMerchantTransfer
- MerchantTransferFromMerchantToWorking
- MerchantTransferFromWorkingToMerchant
- MerchantServicesMMFAccountTransfer
- AgencyFloatAdvance

6.1.1 GenericApiRequest

```
<soapenv:Envelope xmlns:soapenv="http://schemas.xmlsoap.org/soap/envelope/" xmlns:req="http://api-
v1.gen.mm.vodafone.com/mminterface/request">
  <soapenv:Header>
    <tns:RequestSOAPHeader xmlns:tns="http://www.huawei.com/schema/osg/common/v2_1">
      <tns:spld>898989</tns:spld>
      <tns:spPassword>REQ5OEM1Njc0RTI5ODMwQkJDZG1OTE5OEYzRTZDNDJGRjgwOTgyQzg2Qzk3Q0QwRTRDOT
c5QklyRTZGRTIEQg==</tns:spPassword>
      <tns:timeStamp>20140223113340</tns:timeStamp>
      <tns:serviceId>898989000</tns:serviceId>
    </tns:RequestSOAPHeader>
  </soapenv:Header>
  <soapenv:Body>
    <req:RequestMsg><![CDATA[<?xml version='1.0' encoding='UTF-8'?><request xmlns="http://api-
v1.gen.mm.vodafone.com/mminterface/request">
      <Transaction>
        <CommandID>BusinessPayBill</CommandID>
```

PROJECT NAME: M-PESA	
DOCUMENT NAME: DEVELOPER'S GUIDE- B2B INTERFACE	VERSION: 0.3
COMPANY/DIVISION: PRODUCT AND SERVICE DEVELOPMENT	DATE: 24 TH APRIL 2015

```

<LanguageCode></LanguageCode>
<OriginatorConversationID>CV3-844355122-244w1a-ggz</OriginatorConversationID>
<ConversationID></ConversationID>
<Remark>0</Remark>
<Parameters>
  <Parameter>
    <Key>Amount</Key>
    <Value>-7000</Value>
  </Parameter>
  <Parameter>
    <Key>AccountReference</Key>
    <Value>7000</Value>
  </Parameter>
</Parameters>
<ReferenceData>
  <ReferenceItem>
    <Key>QueueTimeoutURL</Key>
    <Value>http://10.66.49.201:</Value>
  </ReferenceItem></ReferenceData>
  <Timestamp>2014-09-30T11:03:19.111+03:00</Timestamp>
</Transaction>
<Identity>
  <Caller>
    <CallerType>2</CallerType>
    <ThirdPartyID>broker_4</ThirdPartyID>
    <Password> +JDzEIAwG4IJx98dh5C4AOA==</Password>
    <Checksum>null</Checksum>
    <ResultURL>http://10.66.50.133:8097/</ResultURL>
  </Caller>
</Initiator>

```

PROJECT NAME: M-PESA	
DOCUMENT NAME: DEVELOPER'S GUIDE- B2B INTERFACE	VERSION: 0.3
COMPANY/DIVISION: PRODUCT AND SERVICE DEVELOPMENT	DATE: 24 TH APRIL 2015

```

<IdentifierType>11</IdentifierType>
<Identifier>simulator</Identifier>

<SecurityCredential>pnrgp7djZmWBKdLDzLkdeUrFyzfQULTc+ezg+i/TcgYVCYBB9C4MalfdBidZaEagZYWMFjqC0CjL
QWLrd602zhtt1kRtuxQUQHAqEem6z8uEZxcbGhYyQsNbo+3RKq8dC5IC7ITPg61LkaehLnyOx2CbA2/jkQG8JMOljgg!
1np+7wtbBWZ7yr5cLfkbrYvIppkUprvQ+QA8VJnlbFxmVBTdTFkKVVLfImxeErsv5pyEseOIJFLocHuVmxyaXvM3aY1UA
5GQzBqxCO5S1yNZwxFJHyzkETUE7S+tJfBwAChy0oVn6ChfAZH6MhGjp8wf5aA==</SecurityCredential>

<ShortCode>992708</ShortCode>

</Initiator>

<PrimaryParty>
  <IdentifierType>4</IdentifierType>
  <Identifier>992708</Identifier>
  <ShortCode></ShortCode>
</PrimaryParty>
<ReceiverParty>
  <IdentifierType>4</IdentifierType>
  <Identifier>376850</Identifier>
  <ShortCode></ShortCode>
</ReceiverParty>
<AccessDevice>
  <IdentifierType>4</IdentifierType>
  <Identifier>1</Identifier>
  </AccessDevice></Identity>
  <KeyOwner>1</KeyOwner>
</request>]]></req:RequestMsg>
</soapenv:Body>
</soapenv:Envelope>

```

6.1.2 GenericApiResponse

```

<soapenv:Envelope xmlns:soapenv="http://schemas.xmlsoap.org/soap/envelope/">
  <soapenv:Body>

```


PROJECT NAME: M-PESA	
DOCUMENT NAME: DEVELOPER'S GUIDE- B2B INTERFACE	VERSION: 0.3
COMPANY/DIVISION: PRODUCT AND SERVICE DEVELOPMENT	DATE: 24 TH APRIL 2015

```
<req:ResponseMsg xmlns:req="http://api-v1.gen.mm.vodafone.com/mminterface/request"><![CDATA[<?xml version="1.0" encoding="UTF-8"?><response xmlns="http://api-v1.gen.mm.vodafone.com/mminterface/response"><ResponseCode>0</ResponseCode><ConversationID>AG_20150424_0000626ec4aeb2ca2256</ConversationID><ResponseDesc>Accept the service request successfully.</ResponseDesc><OriginatorConversationID>CV3-844355122-244w1a-ggz</OriginatorConversationID><ServiceStatus>0</ServiceStatus></response>]]></req:ResponseMsg>

</soapenv:Body>

</soapenv:Envelope>
```

6.1.3 GenericAPIResult

```
<soapenv:Envelope xmlns:soapenv="http://schemas.xmlsoap.org/soap/envelope/">

  <soapenv:Body>

    <res:ResultMsg xmlns:res="http://api-v1.gen.mm.vodafone.com/mminterface/result"><![CDATA[<?xml version="1.0" encoding="UTF-8"?><Result xmlns="http://api-v1.gen.mm.vodafone.com/mminterface/result"><ResultType>0</ResultType><ResultCode>0</ResultCode><ResultDesc>Accept the service request successfully.</ResultDesc><OriginatorConversationID>CV3-844111355122-244w1a-ggz</OriginatorConversationID><ConversationID>AG_20150424_0000643cae726da52ba8</ConversationID><TransactionID>JDO71LM99</TransactionID><ResultParameters><ResultParameter><Key>InitiatorAccountCurrentBalance</Key><Value>{Amount={BasicAmount=2714803.00, MinimumAmount=271480300, CurrencyCode=KES}}</Value></ResultParameter><ResultParameter><Key>DebitAccountCurrentBalance</Key><Value>{Amount={BasicAmount=2714803.00, MinimumAmount=271480300, CurrencyCode=KES}}</Value></ResultParameter><ResultParameter><Key>Amount</Key><Value>7000.00</Value></ResultParameter><ResultParameter><Key>DebitPartyAffectedAccountBalance</Key><Value>MMF Organization Account|KES|2714803.00|2714803.00|0.00|50000000.00</Value></ResultParameter><ResultParameter><Key>TransCompletedTime</Key><Value>20150424170252</Value></ResultParameter><ResultParameter><Key>DebitPartyCharges</Key><Value></Value></ResultParameter><ResultParameter><Key>ReceiverPartyPublicName</Key><Value>888888 - KPLC TEST</Value></ResultParameter><ResultParameter><Key>CreditPartyAffectedAccountBalance</Key><Value>Utility Account|KES|11000.00|11000.00|0.00|0.00&Charges Paid Account|KES|-385.00|-385.00|0.00|0.00</Value></ResultParameter><ResultParameter><Key>CreditAccountCurrentBalance</Key><Value>{Amount={BasicAmount=11000.00, MinimumAmount=1100000, CurrencyCode=KES}}</Value></ResultParameter><ResultParameter><Key>Currency</Key><Value>KES</Value></ResultParameter></ResultParameters><ReferenceData><Referenceltem><Key>BillReferenceNumber</Key><Value>7000</Value></Referenceltem><Referenceltem><Key>QueueTimeoutURL</Key><Value>http://10.66.49.201:</Value></Referenceltem></ReferenceData></Result>]]></res:ResultMsg>

  </soapenv:Body>

</soapenv:Envelope>
```

PROJECT NAME: M-PESA	
DOCUMENT NAME: DEVELOPER'S GUIDE- B2B INTERFACE	VERSION: 0.3
COMPANY/DIVISION: PRODUCT AND SERVICE DEVELOPMENT	DATE: 24 TH APRIL 2015

6.2 OrgRevenueSettlement

6.2.1 GenericApiRequest

```

<soapenv:Envelope xmlns:soapenv="http://schemas.xmlsoap.org/soap/envelope/" xmlns:req="http://api-
v1.gen.mm.vodafone.com/mminterface/request">

  <soapenv:Header>

    <tns:RequestSOAPHeader xmlns:tns="http://www.huawei.com/schema/osg/common/v2_1">

      <tns:spld>898989</tns:spld>

      <tns:spPassword>REQ5OEM1Njc0RTI5ODMwQkJDZzg1OTE5OEYzRTZDNDJGRjgwOTgyQzg2Qzk3Q0QwRTRDOT
c5QklyRTZGRTIEQg==</tns:spPassword>

      <tns:timeStamp>20140223113340</tns:timeStamp>

      <tns:serviceId>898989000</tns:serviceId>

    </tns:RequestSOAPHeader>

  </soapenv:Header>

  <soapenv:Body>

    <req:RequestMsg><![CDATA[<?xml version='1.0' encoding='UTF-8'?><request xmlns="http://api-
v1.gen.mm.vodafone.com/mminterface/request">

<Transaction>

  <CommandID>OrgRevenueSettlement</CommandID>

  <LanguageCode></LanguageCode>

  <OriginatorConversationID>11135511223-244w1a-ggz</OriginatorConversationID>

  <ConversationID></ConversationID>

  <Remark>0</Remark>

<Parameters>

<Parameter>


  <Key>HeadOffice</Key>

  <Value></Value>

</Parameter>

</Parameters>

```

PROJECT NAME: M-PESA	
DOCUMENT NAME: DEVELOPER'S GUIDE- B2B INTERFACE	VERSION: 0.3
COMPANY/DIVISION: PRODUCT AND SERVICE DEVELOPMENT	DATE: 24 TH APRIL 2015

```

<ReferenceData>
  <ReferenceItem>
    <Key>QueueTimeoutURL</Key>
    <Value>http://10.66.49.201:</Value>
  </ReferenceItem></ReferenceData>
  <Timestamp>2014-09-30T11:03:19.111+03:00</Timestamp>
</Transaction>
<Identity>
  <Caller>
    <CallerType>2</CallerType>
    <ThirdPartyID>broker_4</ThirdPartyID>
    <Password> +JDzEIAwG4IJx98dh5C4AOA==</Password>
    <Checksum>null</Checksum>
    <ResultURL>http://10.66.50.133:8097/</ResultURL>
  </Caller>
<Initiator>
  <IdentifierType>11</IdentifierType>
  <Identifier>simulator</Identifier>

  <SecurityCredential>pnrgp7djZmWBKdLDzLkdeUrFyzfQULTc+ezg+i/TcgYVCYBB9C4MalfdBidZaEagZYWMFjqC0CjL
  QWLrd602zhtt1kRtuxkQ76rHf5s17jq4FXtmQUQHAqEem6z8uEZxcbGhYyQsNbo+3RKq8dC5IC7ITPg61LkaehLnyOx2
  CbA2/jkQG8JMOljgg11np+7wtbBWZ7yr5cLfkbrYvIppkUprvQ+QA8VJnlbFxmvtBTdTFkKVVLfImxeErsv5pyEseOIJFLoCH
  uVmxyaXvM3aY1UA5GQzBqxCO5S1yNZwxFJHyzkETUE7S+UjfbWACHy0oVn6ChfAZH6MhGjp8wf5aA==</SecurityCr
  edential>

  <ShortCode>797900</ShortCode>

  </Initiator>

  <PrimaryParty>
    <IdentifierType>4</IdentifierType>
    <Identifier>797900</Identifier>
    <ShortCode></ShortCode>
  </PrimaryParty>

```

PROJECT NAME: M-PESA	
DOCUMENT NAME: DEVELOPER'S GUIDE- B2B INTERFACE	VERSION: 0.3
COMPANY/DIVISION: PRODUCT AND SERVICE DEVELOPMENT	DATE: 24 TH APRIL 2015

```

<ReceiverParty>
  <IdentifierType>4</IdentifierType>
  <Identifier>797900</Identifier>
  <ShortCode></ShortCode>
</ReceiverParty>
<AccessDevice>
  <IdentifierType>4</IdentifierType>
  <Identifier>1</Identifier>
</AccessDevice></Identity>
  <KeyOwner>1</KeyOwner>
</request>]]></req:RequestMsg>
</soapenv:Body>
</soapenv:Envelope>

```

6.2.2 GenericApiResponse

```

<soapenv:Envelope xmlns:soapenv="http://schemas.xmlsoap.org/soap/envelope/">
  <soapenv:Body>
    <req:ResponseMsg xmlns:req="http://api-v1.gen.mm.vodafone.com/mminterface/request"><![CDATA[<?xml
version="1.0" encoding="UTF-8"?><response xmlns="http://api-
v1.gen.mm.vodafone.com/mminterface/response"><ResponseCode>0</ResponseCode><ConversationID>AG_20150
424_00005422d2042748a855</ConversationID><ResponseDesc>Accept the service request
successfully.</ResponseDesc><OriginatorConversationID>11135511223-244w1a-
ggz</OriginatorConversationID><ServiceStatus>0</ServiceStatus></response>]]></req:ResponseMsg>
  </soapenv:Body>
</soapenv:Envelope>

```

6.2.3 GenericAPIResult

```

<soapenv:Envelope xmlns:soapenv="http://schemas.xmlsoap.org/soap/envelope/">
  <soapenv:Body>
    <res:ResultMsg xmlns:res="http://api-v1.gen.mm.vodafone.com/mminterface/result"><![CDATA[<?xml version="1.0"
encoding="UTF-8"?><Result xmlns="http://api-
v1.gen.mm.vodafone.com/mminterface/result"><ResultType>0</ResultType><ResultCode>0</ResultCode><ResultDe
sc>Accept the service request successfully.</ResultDesc><OriginatorConversationID>11135511223-244w1a-
ggz</OriginatorConversationID><ConversationID>AG_20150424_00005422d2042748a855</ConversationID><Transa

```

PROJECT NAME: M-PESA	
DOCUMENT NAME: DEVELOPER'S GUIDE- B2B INTERFACE	VERSION: 0.3
COMPANY/DIVISION: PRODUCT AND SERVICE DEVELOPMENT	DATE: 24 TH APRIL 2015

```

ctionID>JDOJ1LNTP</TransactionID><ResultParameters><ResultParameter><Key>FundsMovement</Key><Value>M
erchant Account|Organization Settlement Account|KES|0.00&Organization Settlement Account|Charges Paid
Account|KES|0.00&Working Account|Organization Settlement
Account|KES|0.00</Value></ResultParameter><ResultParameter><Key>AccountBalanceAfterSettlement</Key><Valu
e>Working Account|KES|56.03|56.03|0.00|0.00&Utility Account|KES|0.00|0.00|0.00|0.00&Charges Paid
Account|KES|0.00|0.00|0.00|0.00&Merchant Account|KES|0.00|0.00|0.00|0.00&Organization Settlement
Account|KES|0.00|0.00|0.00|0.00</Value></ResultParameter><ResultParameter><Key>BOCompletedTime</Key><Val
ue>20150424183949</Value></ResultParameter><ResultParameter><Key>SettlementPlanID</Key><Value>172110</
Value></ResultParameter></ResultParameters><ReferenceData><ReferenceItem><Key>QueueTimeoutURL</Key><
Value>http://10.66.49.201:</Value></ReferenceItem></ReferenceData></Result>]]</res:ResultMsg>

</soapenv:Body>

</soapenv:Envelope>

```

6.3 OrgBankAccountWithdrawal

6.3.1 GenericApiRequest

```

<soapenv:Envelope xmlns:soapenv="http://schemas.xmlsoap.org/soap/envelope/" xmlns:req="http://api-
v1.gen.mm.vodafone.com/mminterface/request">

  <soapenv:Header>

    <tns:RequestSOAPHeader xmlns:tns="http://www.huawei.com/schema/osg/common/v2_1">

      <tns:spld>898989</tns:spld>

      <tns:spPassword>REQ5OEM1Njc0RTI5ODMwQkJDZG1OTE5OEYzRTZDNDJGRjgwOTgyQzg2Qzk3Q0QwRTRDOT
c5QklyRTZGRTIEQg==</tns:spPassword>

      <tns:timeStamp>20140223113340</tns:timeStamp>

      <tns:serviceId>898989000</tns:serviceId>

    </tns:RequestSOAPHeader>

  </soapenv:Header>

  <soapenv:Body>

    <req:RequestMsg><![CDATA[<?xml version='1.0' encoding='UTF-8'?><request xmlns="http://api-
v1.gen.mm.vodafone.com/mminterface/request">

<Transaction>

  <CommandID>OrgBankAccountWithdrawal</CommandID>

  <LanguageCode></LanguageCode>

```

PROJECT NAME: M-PESA	
DOCUMENT NAME: DEVELOPER'S GUIDE- B2B INTERFACE	VERSION: 0.3
COMPANY/DIVISION: PRODUCT AND SERVICE DEVELOPMENT	DATE: 24 TH APRIL 2015

```

<OriginatorConversationID>CV3-84122752721313411355122-244w1a-ggz</OriginatorConversationID>

<ConversationID></ConversationID>

<Remark>0</Remark>

<Parameters>
  <Parameter>
    <Key>HeadOffice</Key>
    <Value></Value>
  </Parameter>
  <Parameter>
    <Key>Amount</Key>
    <Value>35000</Value>
  </Parameter>
</Parameters>

<ReferenceData>
  <ReferenceItem>
    <Key>QueueTimeoutURL</Key>
    <Value>http://10.66.49.201:</Value>
  </ReferenceItem></ReferenceData>

  <Timestamp>2014-09-30T11:03:19.111+03:00</Timestamp>
</Transaction>

<Identity>
  <Caller>
    <CallerType>2</CallerType>
    <ThirdPartyID>broker_4</ThirdPartyID>
    <Password> dh5C4AOA==</Password>
    <Checksum>null</Checksum>
    <ResultURL>http://10.66.50.133:8097/</ResultURL>

```

PROJECT NAME: M-PESA	
DOCUMENT NAME: DEVELOPER'S GUIDE- B2B INTERFACE	VERSION: 0.3
COMPANY/DIVISION: PRODUCT AND SERVICE DEVELOPMENT	DATE: 24 TH APRIL 2015

```

    </Caller>

    <Initiator>

        <IdentifierType>11</IdentifierType>

        <Identifier>simulator</Identifier>

        <SecurityCredential>pnrgp7djZmWBKdLDzLkdeUrFyzfQULTc+ezg+i/TcgYVCYBB9C4MalfdBidZaEagZYWMFjqC0CjL
        QWLRd602zhtt1kRtuxkQ76rHf5s17jq4FXtmQUQHAqEem6z8uEZxcbGhYyQsNbo+3RKq8dC5IC7ITPg61LkaehLnyOx2
        CbA2/jkQG8JMOljggl1np+7wtbBWZ7yr5cLfkbrYvlpkUprvQ+QA8VJnlbFxmvtBTdTFkKVVLFlmxeErsv5pyEseOIJFLocH
        uVmxyaXvM3aY1UA5GQzBqxCO5S1yNZwxFJHyzkETUE7S+tJjfBwAChy0oVn6ChfAZH6MhGjp8wf5aA==</SecurityCr
        edential>

        <ShortCode>888888</ShortCode>

    </Initiator>

    <PrimaryParty>

        <IdentifierType>4</IdentifierType>

        <Identifier>888888</Identifier>

        <ShortCode></ShortCode>

    </PrimaryParty>

    <AccessDevice>

        <IdentifierType>4</IdentifierType>

        <Identifier>1</Identifier>

    </AccessDevice></Identity>

    <KeyOwner>1</KeyOwner>

    </request>]]></req:RequestMsg>

</soapenv:Body>

```

6.3.2 GenericApiResponse

```

<soapenv:Envelope xmlns:soapenv="http://schemas.xmlsoap.org/soap/envelope/">

    <soapenv:Body>

        <req:ResponseMsg xmlns:req="http://api-v1.gen.mm.vodafone.com/mminterface/request"><![CDATA[<?xml
        version="1.0" encoding="UTF-8"?><response xmlns="http://api-
        v1.gen.mm.vodafone.com/mminterface/response"><ResponseCode>0</ResponseCode><ConversationID>AG_20150

```

PROJECT NAME: M-PESA	
DOCUMENT NAME: DEVELOPER'S GUIDE- B2B INTERFACE	VERSION: 0.3
COMPANY/DIVISION: PRODUCT AND SERVICE DEVELOPMENT	DATE: 24 TH APRIL 2015

```

424_000079089ed6afaef43e</ConversationID><ResponseDesc>Accept the service request
successfully.</ResponseDesc><OriginatorConversationID>CV3-84122752721313411355122-244w1a-
ggz</OriginatorConversationID><ServiceStatus>0</ServiceStatus></response>]]</req:ResponseMsg>

</soapenv:Body>

</soapenv:Envelope>

```

6.3.3 GenericAPIResult

```

<soapenv:Envelope xmlns:soapenv="http://schemas.xmlsoap.org/soap/envelope/">

  <soapenv:Body>

    <res:ResultMsg xmlns:res="http://api-v1.gen.mm.vodafone.com/mminterface/result"><![CDATA[<?xml version="1.0"
encoding="UTF-8"?><Result xmlns="http://api-
v1.gen.mm.vodafone.com/mminterface/result"><ResultType>0</ResultType><ResultCode>0</ResultCode><ResultDe
sc>Accept the service request successfully.</ResultDesc><OriginatorConversationID>CV3-
84122752721313411355122-244w1a-
ggz</OriginatorConversationID><ConversationID>AG_20150424_000079089ed6afaef43e</ConversationID><Transact
ionID>JDO61LLIU</TransactionID><ResultParameters><ResultParameter><Key>Amount</Key><Value>35000</Valu
e></ResultParameter><ResultParameter><Key>DebitPartyCharges</Key><Value></Value></ResultParameter><Resu
ltParameter><Key>TransCompletedTime</Key><Value>20150424191131</Value></ResultParameter><ResultParamet
er><Key>DebitPartyAffectedAccountBalance</Key><Value>Working
Account|KES|140000.00|140000.00|0.00|0.00</Value></ResultParameter></ResultParameters><ReferenceData><Ref
erenceItem><Key>QueueTimeoutURL</Key><Value>http://10.66.49.201:</Value></ReferenceItem></ReferenceData>
</Result>]]></res:ResultMsg>

  </soapenv:Body>

</soapenv:Envelope>

```

6.4 TransactionStatusQuery

6.4.1 GenericApiRequest

ReceiptNumber

```

<soapenv:Envelope          xmlns:soapenv="http://schemas.xmlsoap.org/soap/envelope/"          xmlns:req="http://api-
v1.gen.mm.vodafone.com/mminterface/request">

  <soapenv:Header>

    <tns:RequestSOAPHeader xmlns:tns="http://www.huawei.com/schema/osg/common/v2_1">

      <tns:spld>151815</tns:spld>

```


PROJECT NAME: M-PESA	
DOCUMENT NAME: DEVELOPER'S GUIDE- B2B INTERFACE	VERSION: 0.3
COMPANY/DIVISION: PRODUCT AND SERVICE DEVELOPMENT	DATE: 24 TH APRIL 2015

```

<tns:spPassword>ODExNERCMDICNjVDRkYxQUFCNzE5MkE1OEQyMjJDMzk1RUFCNzgwMjk2ODE4Rjk1OTE2MEFGNDU1QkRCMD
kyMg==</tns:spPassword>

    <tns:timeStamp>20140730093620</tns:timeStamp>

    <tns:serviceId>151815000</tns:serviceId>

</tns:RequestSOAPHeader>

</soapenv:Header>

<soapenv:Body>

    <req:RequestMsg><![CDATA[<?xml          version='1.0'          encoding='UTF-8'?><request          xmlns="http://api-
v1.gen.mm.vodafone.com/mminterface/request">

        <Transaction>

            <CommandID>TransactionStatusQuery</CommandID>

            <LanguageCode>0</LanguageCode>

            <OriginatorConversationID>R9I1-7894-7895-4125-770</OriginatorConversationID>

            <ConversationID></ConversationID>

            <Remark>0</Remark>

            <Parameters><Parameter>

                <Key>ReceiptNumber</Key>

                <Value>X-IL144</Value>

            </Parameter>

        </Parameters>

        <ReferenceData>

            <ReferenceItem>

                <Key>QueueTimeoutURL</Key>

                <Value>http://10.66.49.201:8989/</Value>

            </ReferenceItem></ReferenceData>

            <Timestamp>2014-09-27T12:53:19.0000521Z</Timestamp>

        </Transaction>

        <Identity>

        <Caller>

```

PROJECT NAME: M-PESA	
DOCUMENT NAME: DEVELOPER'S GUIDE- B2B INTERFACE	VERSION: 0.3
COMPANY/DIVISION: PRODUCT AND SERVICE DEVELOPMENT	DATE: 24 TH APRIL 2015

```

    <CallerType>2</CallerType>

    <ThirdPartyID>898940</ThirdPartyID>

    <Password>Password0</Password>

    <Checksum>Checksum0</Checksum>

    <ResultURL>http://10.66.49.201:8096/</ResultURL>

</Caller>

<Initiator>

    <IdentifierType>11</IdentifierType>

    <Identifier>c2bib</Identifier>

    <SecurityCredential>bJJbCA4QT/W7pVT9g+3dctjQIFU2ojSUVeqz5YUB+uUp66D9UhjjZshXJy+9mDeSpRnEQbs6H8wGrhh23AVuP2
/cyDqE6xfhaShW3KdtVt+AquatUaBfLb6SPgN9egkUkn4hsXWk+nhfY7RsmDMKy4IRBYTijMuePe6yGw17keEjZOL4+k4nWa1jVvRpPI6uA
FJSY33plxuLh2Tx+kArg5l4B4JQKOiw2m7CPnVU0jvq8xsGarOlN2COCjEt3G/Br0WpnrK71+HzvhABh9U8lnN25EvU7rjATzLwIF8MgVv+k
u2HDS62x0ZmTKUXH1srsSBaKEjiThccFrXTEkFQ==</SecurityCredential>

    <ShortCode>898940</ShortCode>

</Initiator>

    <PrimaryParty>

        <IdentifierType>4</IdentifierType>

        <Identifier>898940</Identifier>

        <ShortCode></ShortCode>

    </PrimaryParty>

    <ReceiverParty>

        <IdentifierType>4</IdentifierType>

        <Identifier>898940</Identifier>

        <ShortCode></ShortCode>

    </ReceiverParty>

    <AccessDevice>

        <IdentifierType>1</IdentifierType>

        <Identifier>Identifier3</Identifier>

    </AccessDevice></Identity>

    <KeyOwner>1</KeyOwner>

```

PROJECT NAME: M-PESA	
DOCUMENT NAME: DEVELOPER'S GUIDE- B2B INTERFACE	VERSION: 0.3
COMPANY/DIVISION: PRODUCT AND SERVICE DEVELOPMENT	DATE: 24 TH APRIL 2015

```

</request>]]></req:RequestMsg>

</soapenv:Body>

</soapenv:Envelope>

```

OriginatorConversationID

```

<soapenv:Envelope xmlns:soapenv="http://schemas.xmlsoap.org/soap/envelope/" xmlns:req="http://api-
v1.gen.mm.vodafone.com/mminterface/request">

  <soapenv:Header>

    <tns:RequestSOAPHeader xmlns:tns="http://www.huawei.com/schema/osg/common/v2_1">

      <tns:spld>151815</tns:spld>

      <tns:spPassword>ODExNERCMDICNjVDRkYxQUFCNzE5MkE1OEQyMjJDMzk1RUFCNzgWmjk2ODE4Rjk1OTE2MEFGNDU1QkRCMD
      kyMg==</tns:spPassword>

      <tns:timeStamp>20140730093620</tns:timeStamp>

      <tns:serviceId>151815000</tns:serviceId>

    </tns:RequestSOAPHeader>

  </soapenv:Header>

  <soapenv:Body>

    <req:RequestMsg><![CDATA[<?xml version='1.0' encoding='UTF-8'?><request xmlns='http://api-
v1.gen.mm.vodafone.com/mminterface/request'>

      <Transaction>

        <CommandID>TransactionStatusQuery</CommandID>

        <LanguageCode>0</LanguageCode>

        <OriginatorConversationID>R9l1-7894-7895-4125-771</OriginatorConversationID>

        <ConversationID></ConversationID>

        <Remark>0</Remark>

        <Parameters><Parameter>

          <Key>OriginatorConversationID</Key>

          <Value>R9l1-7894-7895-4125-768</Value>

        </Parameter>

      </Parameters>

```

PROJECT NAME: M-PESA	
DOCUMENT NAME: DEVELOPER'S GUIDE- B2B INTERFACE	VERSION: 0.3
COMPANY/DIVISION: PRODUCT AND SERVICE DEVELOPMENT	DATE: 24 TH APRIL 2015

```

<ReferenceData>
  <ReferenceItem>
    <Key>QueueTimeoutURL</Key>
    <Value>http://10.66.49.201:8989/</Value>
  </ReferenceItem></ReferenceData>
  <Timestamp>2014-09-27T12:53:19.0000521Z</Timestamp>
</Transaction>
<Identity>
  <Caller>
    <CallerType>2</CallerType>
    <ThirdPartyID>898940</ThirdPartyID>
    <Password>Password0</Password>
    <Checksum>Checksum0</Checksum>
    <ResultURL>http://10.66.49.201:8096/</ResultURL>
  </Caller>
  <Initiator>
    <IdentifierType>11</IdentifierType>
    <Identifier>c2bib</Identifier>

    <SecurityCredential>bJJbCA4QT/W7pVT9g+3dctjQIFU2ojSUVeqz5YUB+uUp66D9UhjjZshXJy+9mDeSpRnEQbs6H8wGrhh23AVuP2
/cyDqE6xfhaShW3KdtVt+AquatUaBfLb6SPgN9egkUkn4hsXWk+nhfY7RsmDMKy4IRBYTijMuePe6yGw17keEjZOL4+k4nWa1jVvRpPI6uA
FJSY33plxuLh2Tx+kArg5l4B4JQKOiw2m7CPnVU0jnvq8xsGarOln2COCjEt3G/Br0WpnrK71+HzvhABh9U8lnN25EvU7rjATzLwIF8MgVv+k
u2HDS62x0ZmTKUXH1srsSBaKEjiThccFrFXTEkFQ==</SecurityCredential>

    <ShortCode>898940</ShortCode>
  </Initiator>
  <PrimaryParty>
    <IdentifierType>4</IdentifierType>
    <Identifier>898940</Identifier>
    <ShortCode></ShortCode>
  </PrimaryParty>
  <ReceiverParty>

```

PROJECT NAME: M-PESA	
DOCUMENT NAME: DEVELOPER'S GUIDE- B2B INTERFACE	VERSION: 0.3
COMPANY/DIVISION: PRODUCT AND SERVICE DEVELOPMENT	DATE: 24 TH APRIL 2015

```

<IdentifierType>4</IdentifierType>

<Identifier>898940</Identifier>

<ShortCode></ShortCode>

</ReceiverParty>

<AccessDevice>

    <IdentifierType>1</IdentifierType>

    <Identifier>Identifier3</Identifier>

</AccessDevice></Identity>

    <KeyOwner>1</KeyOwner>

</request>]]></req:RequestMsg>

</soapenv:Body>

</soapenv:Envelope>

```

ConversationID

```

<soapenv:Envelope xmlns:soapenv="http://schemas.xmlsoap.org/soap/envelope/" xmlns:req="http://api-
v1.gen.mm.vodafone.com/mminterface/request">

  <soapenv:Header>

    <tns:RequestSOAPHeader xmlns:tns="http://www.huawei.com/schema/osg/common/v2_1">

      <tns:spld>151515</tns:spld>

      <tns:spPassword>ODExNERCMDICNjVDRkYxQUFCNzE5Mke1OEQyMjJDMzk1RUFCNzgWmjk2ODE4Rjk1OTE2MEFGNDU1QkRCMD
      kyMg==</tns:spPassword>

      <tns:timeStamp>20140730093620</tns:timeStamp>

      <tns:serviceId>151515000</tns:serviceId>

    </tns:RequestSOAPHeader>

  </soapenv:Header>

  <soapenv:Body>

    <req:RequestMsg><![CDATA[<?xml version='1.0' encoding='UTF-8'?><request xmlns='http://api-
v1.gen.mm.vodafone.com/mminterface/request'>

      <Transaction>

        <CommandID>TransactionStatusQuery</CommandID>

        <LanguageCode>0</LanguageCode>

```

PROJECT NAME: M-PESA	
DOCUMENT NAME: DEVELOPER'S GUIDE- B2B INTERFACE	VERSION: 0.3
COMPANY/DIVISION: PRODUCT AND SERVICE DEVELOPMENT	DATE: 24 TH APRIL 2015

```

<OriginatorConversationID>R9I1-7894-7895-4125-772</OriginatorConversationID>

<ConversationID></ConversationID>

<Remark>0</Remark>

<Parameters><Parameter>

  <Key>ConversationID</Key>

  <Value>e2b2b4db-62a0-457f-927c-9b442f65bb15</Value>

</Parameter>

</Parameters>

<ReferenceData>

  <Referenceltem>

    <Key>QueueTimeoutURL</Key>

    <Value>http://10.66.49.201:8989/</Value>

  </Referenceltem></ReferenceData>

  <Timestamp>2014-09-27T12:53:19.0000521Z</Timestamp>

</Transaction>

<Identity>

  <Caller>

    <CallerType>2</CallerType>

    <ThirdPartyID>898940</ThirdPartyID>

    <Password>Password0</Password>

    <Checksum>Checksum0</Checksum>

    <ResultURL>http://10.66.49.201:8096/</ResultURL>

  </Caller>


  <Initiator>

    <IdentifierType>11</IdentifierType>

    <Identifier>c2bib</Identifier>

    <SecurityCredential>bJJbCA4QT/W7pVT9g+3dctjQIFU2ojSUVeqz5YUB+uUp66D9UhjjZshXJy+9mDeSpRnEQbs6H8wGrhh23AVuP2/cyDqE6xfhaShW3KdtVt+AquatUaBfLb6SPgN9egkUkn4hsXWk+nhfY7RsmDKy4IRBYTijMuePe6yGw17keEjZOL4+k4nWa1jVvRpPI6uA

```

PROJECT NAME: M-PESA	
DOCUMENT NAME: DEVELOPER'S GUIDE- B2B INTERFACE	VERSION: 0.3
COMPANY/DIVISION: PRODUCT AND SERVICE DEVELOPMENT	DATE: 24 TH APRIL 2015

```
FJSY33plxuLh2Tx+kArg5l4B4JQKOiw2m7CPnVU0jvhvq8xsGarOln2COCjEt3G/Br0WpnrK71+HzvhABh9U8lnN25EvU7rjATzLwF8MgVv+k
u2HDS62x0ZmTKUXH1srsSBaKEjiThccFrFXTEkFQ==</SecurityCredential>
```

```
<ShortCode>898940</ShortCode>

</Initiator>

<PrimaryParty>

    <IdentifierType>4</IdentifierType>

    <Identifier>898940</Identifier>

    <ShortCode></ShortCode>

</PrimaryParty>

<ReceiverParty>

    <IdentifierType>4</IdentifierType>

    <Identifier>898940</Identifier>

    <ShortCode></ShortCode>

</ReceiverParty>

<AccessDevice>

    <IdentifierType>1</IdentifierType>

    <Identifier>Identifier3</Identifier>

</AccessDevice></Identity>

    <KeyOwner>1</KeyOwner>

</request>]]></req:RequestMsg>

</soapenv:Body>

</soapenv:Envelope>
```

6.4.2 GenericApiResponse

```
<s:Envelope xmlns:s="http://schemas.xmlsoap.org/soap/envelope/">

  <s:Body xmlns:xsi="http://www.w3.org/2001/XMLSchema-instance" xmlns:xsd="http://www.w3.org/2001/XMLSchema">

    <ResponseMsg
      xmlns="http://api-v1.gen.mm.vodafone.com/mminterface/request"><![CDATA[<Response
      xmlns:i="http://www.w3.org/2001/XMLSchema-instance"
      xmlns="http://api-
      v1.gen.mm.vodafone.com/mminterface/response"><ResponseCode>0</ResponseCode><ConversationID>33922665-4506-40c5-9a8d-
      4b1508ab6a81</ConversationID><OriginatorConversationID>R9I1-7894-7895-4125-
      770</OriginatorConversationID><ServiceStatus>0</ServiceStatus></Response>]]></ResponseMsg>

  </s:Body>
```

PROJECT NAME: M-PESA	
DOCUMENT NAME: DEVELOPER'S GUIDE- B2B INTERFACE	VERSION: 0.3
COMPANY/DIVISION: PRODUCT AND SERVICE DEVELOPMENT	DATE: 24 TH APRIL 2015

</s:Envelope>

6.4.3 GenericAPIResult

```
<s:Envelope xmlns:s="http://schemas.xmlsoap.org/soap/envelope/">
  <s:Body xmlns:xsi="http://www.w3.org/2001/XMLSchema-instance" xmlns:xsd="http://www.w3.org/2001/XMLSchema">
    <ResultMsg
      xmlns="http://api-v1.gen.mm.vodafone.com/mminterface/result">![CDATA[<Result
xmlns:i="http://www.w3.org/2001/XMLSchema-instance"
xmlns="http://api-
v1.gen.mm.vodafone.com/mminterface/result"><ResultType>Completed</ResultType><ResultCode>0</ResultCode><ResultDesc>Succe
ss</ResultDesc><OriginatorConversationID>R9I1-7894-7895-4125-770</OriginatorConversationID><ConversationID>33922665-4506-
40c5-9a8d-4b1508ab6a81</ConversationID><ResultParameters><Parameter><Key
xmlns="http://api-
v1.gen.mm.vodafone.com/mminterface/request">InitiatedTime</Key><Value
xmlns="http://api-
v1.gen.mm.vodafone.com/mminterface/request">26/08/2014 23:05:33</Value></Parameter><Parameter><Key
xmlns="http://api-
v1.gen.mm.vodafone.com/mminterface/request">FinalisedTime</Key><Value
xmlns="http://api-
v1.gen.mm.vodafone.com/mminterface/request">26/08/2014 23:05:33</Value></Parameter><Parameter><Key
xmlns="http://api-
v1.gen.mm.vodafone.com/mminterface/request">TransactionType</Key><Value
xmlns="http://api-
v1.gen.mm.vodafone.com/mminterface/request">Business Pay Bill</Value></Parameter><Parameter><Key
xmlns="http://api-
v1.gen.mm.vodafone.com/mminterface/request">ReceiptNo</Key><Value
xmlns="http://api-
v1.gen.mm.vodafone.com/mminterface/request">X-IL 144</Value></Parameter><Parameter><Key
xmlns="http://api-
v1.gen.mm.vodafone.com/mminterface/request">TransactionStatus</Key><Value
xmlns="http://api-
v1.gen.mm.vodafone.com/mminterface/request">Completed</Value></Parameter><Parameter><Key
xmlns="http://api-
v1.gen.mm.vodafone.com/mminterface/request">TransactionReason</Key><Value
xmlns="http://api-
v1.gen.mm.vodafone.com/mminterface/request" i:nil="true"
/></Parameter><Parameter><Key
xmlns="http://api-
v1.gen.mm.vodafone.com/mminterface/request">DebitPartyName</Key><Value
xmlns="http://api-
v1.gen.mm.vodafone.com/mminterface/request">898940 - Test2b</Value></Parameter><Parameter><Key
xmlns="http://api-
v1.gen.mm.vodafone.com/mminterface/request">CreditPartyName</Key><Value
xmlns="http://api-
v1.gen.mm.vodafone.com/mminterface/request">898940 - Test2b</Value></Parameter><Parameter><Key
xmlns="http://api-
v1.gen.mm.vodafone.com/mminterface/request">DebitAccountType</Key><Value
xmlns="http://api-
v1.gen.mm.vodafone.com/mminterface/request">MMF Account</Value></Parameter><Parameter><Key
xmlns="http://api-
v1.gen.mm.vodafone.com/mminterface/request">DebitAccountBalance</Key><Value
xmlns="http://api-
v1.gen.mm.vodafone.com/mminterface/request">14880.0000</Value></Parameter></ResultParameters><ReferenceData><Referencelte
m><Key
xmlns="http://api-v1.gen.mm.vodafone.com/mminterface/request">QueueTimeoutURL</Key><Value
xmlns="http://api-
v1.gen.mm.vodafone.com/mminterface/request">http://10.66.49.201:8989/</Value></Referenceltem></ReferenceData></Result>]]</Res
ultMsg>
  </s:Body>
</s:Envelope>
```


PROJECT NAME: M-PESA	
DOCUMENT NAME: DEVELOPER'S GUIDE- B2B INTERFACE	VERSION: 0.3
COMPANY/DIVISION: PRODUCT AND SERVICE DEVELOPMENT	DATE: 24 TH APRIL 2015

6.5 Balance Check

6.5.1 GenericApiRequest

```
<soapenv:Envelope xmlns:soapenv="http://schemas.xmlsoap.org/soap/envelope/" xmlns:req="http://api-
v1.gen.mm.vodafone.com/mminterface/request">

  <soapenv:Header>

    <tns:RequestSOAPHeader xmlns:tns="http://www.huawei.com/schema/osg/common/v2_1">

      <tns:spld>151815</tns:spld>

      <tns:spPassword>ODExNERCMDICNjVDRkYxQUFCNzE5MkE1OEQyMjJDMzk1RUFCNzgWmjk2ODE4Rjk1OTE2MEFGNDU1QkRCMD
      kyMg==</tns:spPassword>

      <tns:timeStamp>20140730093620</tns:timeStamp>

      <tns:serviceId>151815000</tns:serviceId>

    </tns:RequestSOAPHeader>

  </soapenv:Header>

  <soapenv:Body>

    <req:RequestMsg><![CDATA[<?xml version='1.0' encoding='UTF-8'?><request xmlns="http://api-
v1.gen.mm.vodafone.com/mminterface/request">

      <Transaction>

        <CommandID>AccountBalance</CommandID>

        <LanguageCode>0</LanguageCode>

        <OriginatorConversationID>LNM-7894-7895-2000-101</OriginatorConversationID>

        <ConversationID></ConversationID>

        <Remark>0</Remark>

      <Parameters>

        <Parameter>

          <Key>ShortCode</Key>

          <Value>898947</Value>

        </Parameter>

      </Parameters>

      <ReferenceData>
```

PROJECT NAME: M-PESA	
DOCUMENT NAME: DEVELOPER'S GUIDE- B2B INTERFACE	VERSION: 0.3
COMPANY/DIVISION: PRODUCT AND SERVICE DEVELOPMENT	DATE: 24 TH APRIL 2015

```

<ReferenceItem>
  <Key>QueueTimeoutURL</Key>
  <Value>http://10.66.49.201:8989</Value>
</ReferenceItem></ReferenceData>
<Timestamp>2014-09-27T12:53:19.0000521Z</Timestamp>
</Transaction>
<Identity>
  <Caller>
    <CallerType>1</CallerType>
    <ThirdPartyID>345612</ThirdPartyID>
    <Password>Password0</Password>
    <Checksum>Checksum0</Checksum>
    <ResultURL>http://10.66.49.201:8096</ResultURL>
  </Caller>
  <Initiator>
    <IdentifierType>11</IdentifierType>
    <Identifier>b2c1b</Identifier>

    <SecurityCredential>kce4dLOTWOG5u45XmIAD+PFRYQJbACWXcGXN76DV/WNEttcMRD5U8Xs8dsgE1sBoyROf9RWcEQK76xT0
eyC9qoDL+ZNtKiFcWn+JL4iD1SUG6tz8FIDuren1+TZ8oGiKiAa3pkts3l2jK1u4ieBrstOAQI9bzQUyCsIsODW4l7VprrwiaVYp3vUbHqxhWxZ
ASNTL2rBuNWxg1ZCDjOehr1JsssyfbEKHRI6hWoamHVLNRNzeqw4dwsuXDom1J6aR+N7LSj0hMhRU4pA6X8KDSqgNOgBkx65VCYt/O
+e8wGKeO72ujskHcc70+a7uLwksa/zzYLzKeOWbONu5CuMxukA==</SecurityCredential>

    <ShortCode>898947</ShortCode>
  </Initiator>

  <ReceiverParty>
    <IdentifierType>4</IdentifierType>
    <Identifier>898947</Identifier>
    <ShortCode></ShortCode>
  </ReceiverParty>
  <AccessDevice>

```

PROJECT NAME: M-PESA	
DOCUMENT NAME: DEVELOPER'S GUIDE- B2B INTERFACE	VERSION: 0.3
COMPANY/DIVISION: PRODUCT AND SERVICE DEVELOPMENT	DATE: 24 TH APRIL 2015

```

<IdentifierType>1</IdentifierType>

<Identifier>Identifier3</Identifier>

</AccessDevice></Identity>

<KeyOwner>1</KeyOwner>

</request>]]></req:RequestMsg>

</soapenv:Body>

</soapenv:Envelope>

```

6.5.2 GenericApiResponse

```

<s:Envelope xmlns:s="http://schemas.xmlsoap.org/soap/envelope/">

  <s:Body xmlns:xsi="http://www.w3.org/2001/XMLSchema-instance" xmlns:xsd="http://www.w3.org/2001/XMLSchema">

    <ResponseMsg
      xmlns="http://api-v1.gen.mm.vodafone.com/mminterface/request"><![CDATA[<Response
      xmlns:i="http://www.w3.org/2001/XMLSchema-instance"
      xmlns="http://api-
      v1.gen.mm.vodafone.com/mminterface/response"><ResponseCode>0</ResponseCode><ConversationID>232f0c91-f7b1-4f4e-a121-
      12ae99464270</ConversationID><OriginatorConversationID>LNM-7894-7895-2000-
      101</OriginatorConversationID><ServiceStatus>0</ServiceStatus></Response>]]></ResponseMsg>

  </s:Body>

</s:Envelope>

```

6.5.3 GenericAPIResult

```

<s:Envelope xmlns:s="http://schemas.xmlsoap.org/soap/envelope/">

  <s:Body xmlns:xsi="http://www.w3.org/2001/XMLSchema-instance" xmlns:xsd="http://www.w3.org/2001/XMLSchema">

    <ResultMsg
      xmlns="http://api-v1.gen.mm.vodafone.com/mminterface/result"><![CDATA[<Result
      xmlns:i="http://www.w3.org/2001/XMLSchema-instance"
      xmlns="http://api-
      v1.gen.mm.vodafone.com/mminterface/result"><ResultType>Completed</ResultType><ResultCode>0</ResultCode><ResultDesc>Succe
      ss</ResultDesc><OriginatorConversationID>LNM-7894-7895-2000-101</OriginatorConversationID><ConversationID>232f0c91-f7b1-
      4f4e-a121-12ae99464270</ConversationID><ResultParameters><Parameter><Key
      v1.gen.mm.vodafone.com/mminterface/request">ShortCode</Key><Value
      v1.gen.mm.vodafone.com/mminterface/request">898947</Value></Parameter><Parameter><Key
      v1.gen.mm.vodafone.com/mminterface/request">OrgainsationName</Key><Value
      v1.gen.mm.vodafone.com/mminterface/request">Test1b</Value></Parameter><Parameter><Key
      v1.gen.mm.vodafone.com/mminterface/request">Working    Account    Available    Funds</Key><Value
      v1.gen.mm.vodafone.com/mminterface/request">0.0000</Value></Parameter><Parameter><Key
      v1.gen.mm.vodafone.com/mminterface/request">Working    Account    Uncleared    Funds</Key><Value
      v1.gen.mm.vodafone.com/mminterface/request">0.0000</Value></Parameter><Parameter><Key
      xmlns="http://api-
      v1.gen.mm.vodafone.com/mminterface/request">ShortCode</Key><Value
      xmlns="http://api-
      v1.gen.mm.vodafone.com/mminterface/request">898947</Value></Parameter><Parameter><Key
      xmlns="http://api-
      v1.gen.mm.vodafone.com/mminterface/request">OrgainsationName</Key><Value
      xmlns="http://api-
      v1.gen.mm.vodafone.com/mminterface/request">Test1b</Value></Parameter><Parameter><Key
      xmlns="http://api-
      v1.gen.mm.vodafone.com/mminterface/request">Working    Account    Available    Funds</Key><Value
      xmlns="http://api-
      v1.gen.mm.vodafone.com/mminterface/request">0.0000</Value></Parameter><Parameter><Key
      xmlns="http://api-
      v1.gen.mm.vodafone.com/mminterface/request">Working    Account    Uncleared    Funds</Key><Value
      xmlns="http://api-
      v1.gen.mm.vodafone.com/mminterface/request">0.0000</Value></Parameter><Parameter><Key

```

PROJECT NAME: M-PESA	
DOCUMENT NAME: DEVELOPER'S GUIDE- B2B INTERFACE	VERSION: 0.3
COMPANY/DIVISION: PRODUCT AND SERVICE DEVELOPMENT	DATE: 24 TH APRIL 2015

```

v1.gen.mm.vodafone.com/mminterface/request">Working      Account      Reserved      Funds</Key><Value
v1.gen.mm.vodafone.com/mminterface/request">0.0000</Value></Parameter><Parameter><Key
v1.gen.mm.vodafone.com/mminterface/request">Working      Account      Account      Number</Key><Value
v1.gen.mm.vodafone.com/mminterface/request">48153-1          </Value></Parameter><Parameter><Key
v1.gen.mm.vodafone.com/mminterface/request">Working      Account      Account      Balance      SetTime</Key><Value
v1.gen.mm.vodafone.com/mminterface/request">22/08/2014      09:02:52</Value></Parameter><Parameter><Key
v1.gen.mm.vodafone.com/mminterface/request">Charges      Paid      Account      Available      Funds</Key><Value
v1.gen.mm.vodafone.com/mminterface/request">0.0000</Value></Parameter><Parameter><Key
v1.gen.mm.vodafone.com/mminterface/request">Charges      Paid      Account      Uncleared      Funds</Key><Value
v1.gen.mm.vodafone.com/mminterface/request">0.0000</Value></Parameter><Parameter><Key
v1.gen.mm.vodafone.com/mminterface/request">Charges      Paid      Account      Reserved      Funds</Key><Value
v1.gen.mm.vodafone.com/mminterface/request">0.0000</Value></Parameter><Parameter><Key
v1.gen.mm.vodafone.com/mminterface/request">Charges      Paid      Account      Account      Number</Key><Value
v1.gen.mm.vodafone.com/mminterface/request">48155-40          </Value></Parameter><Parameter><Key
v1.gen.mm.vodafone.com/mminterface/request">Charges      Paid      Account      Account      Balance      SetTime</Key><Value
v1.gen.mm.vodafone.com/mminterface/request">22/08/2014      09:02:52</Value></Parameter><Parameter><Key
v1.gen.mm.vodafone.com/mminterface/request">Utility      Account      Available      Funds</Key><Value
v1.gen.mm.vodafone.com/mminterface/request">0.0000</Value></Parameter><Parameter><Key
v1.gen.mm.vodafone.com/mminterface/request">Utility      Account      Uncleared      Funds</Key><Value
v1.gen.mm.vodafone.com/mminterface/request">0.0000</Value></Parameter><Parameter><Key
v1.gen.mm.vodafone.com/mminterface/request">Utility      Account      Reserved      Funds</Key><Value
v1.gen.mm.vodafone.com/mminterface/request">0.0000</Value></Parameter><Parameter><Key
v1.gen.mm.vodafone.com/mminterface/request">Utility      Account      Account      Number</Key><Value
v1.gen.mm.vodafone.com/mminterface/request">48155-12          </Value></Parameter><Parameter><Key
v1.gen.mm.vodafone.com/mminterface/request">Utility      Account      Account      Balance      SetTime</Key><Value
v1.gen.mm.vodafone.com/mminterface/request">22/08/2014
09:02:52</Value></Parameter></ResultParameters><ReferenceData><Referenceltem><Key
v1.gen.mm.vodafone.com/mminterface/request">QueueTimeoutURL</Key><Value
v1.gen.mm.vodafone.com/mminterface/request">http://10.66.49.201:8989/</Value></Referenceltem></ReferenceData></Result>]]</Res
ultMsg>

</s:Body>

</s:Envelope>

```


6.6 notifyQueueTimeout

6.6.1 The Broker send notification to the 3rd party

```

<soapenv:Envelope
xmlns:loc="http://www.csapi.org/schema/timeoutnotification/data/v1_0/local"
v1.gen.mm.vodafone.com/mminterface/result">
  <soapenv:Header/>
  <soapenv:Body>
    <loc:notifyQueueTimeout>
      <loc:originatorConversationID>OriginatorConversationID0</loc:originatorConversationID>

```


PROJECT NAME: M-PESA	
DOCUMENT NAME: DEVELOPER'S GUIDE- B2B INTERFACE	VERSION: 0.3
COMPANY/DIVISION: PRODUCT AND SERVICE DEVELOPMENT	DATE: 24 TH APRIL 2015

```
</soapenv:Body>
</soapenv:Envelope>
```

Example2: Error response

```
<soapenv:Envelope xmlns:soapenv="http://schemas.xmlsoap.org/soap/envelope/"
  xmlns:loc="http://www.csapi.org/schema/timeoutnotification/data/v1_0/local"
  xmlns:res="http://api-v1.gen.mm.vodafone.com/mminterface/result">
  <soapenv:Header/>
  <soapenv:Body>
    <loc:notifyQueueTimeoutResponse>
      <loc:result>
        <res:ResultCode>000000001</res:ResultCode>
        <res:ResultDesc> failed </res:ResultDesc>
      </loc:result>
    </loc:notifyQueueTimeoutResponse>
  </soapenv:Body>
</soapenv:Envelope>
```

6.7 queryTransaction

6.7.1 The 3rd party sends query request to the Broker

```
<soapenv:Envelope xmlns:soapenv="http://schemas.xmlsoap.org/soap/envelope/"
  xmlns:v2="http://www.huawei.com.cn/schema/common/v2_1"
  xmlns:loc="http://www.csapi.org/schema/transaction/data/v1_0/local"
  xmlns:res="http://api-v1.gen.mm.vodafone.com/mminterface/result">
  <soapenv:Header>
    <v2:RequestSOAPHeader>
      <v2:spld>151515</v2:spld>
      <v2:spPassword>ODExNERCMDICNjVDRkYxQUFCNzE5MkE1OEQyMjJDMzk1RUFCNzgWmjk2ODE4Rjk1OTE2MEFGNDU1QkRCMDk
yMg==</v2:spPassword>
      <v2:serviceId>151515000</v2:serviceId>
      <v2:timeStamp>20140730093620</v2:timeStamp>
    </v2:RequestSOAPHeader>
  </soapenv:Header>
```


PROJECT NAME: M-PESA	
DOCUMENT NAME: DEVELOPER'S GUIDE- B2B INTERFACE	VERSION: 0.3
COMPANY/DIVISION: PRODUCT AND SERVICE DEVELOPMENT	DATE: 24 TH APRIL 2015

6.8 changePassword

6.8.1 Request example:

```
<soapenv:Envelope xmlns:soapenv="http://schemas.xmlsoap.org/soap/envelope/"
xmlns:loc="http://www.csapi.org/schema/management/data/v1_0/local" xmlns:res="http://api-
v1.gen.mm.vodafone.com/mminterface/result">

  <soapenv:Header/>

  <soapenv:Body>

    <loc:changePassword>

      <loc:spld>3500001</loc:spld>

      <loc:spPassword>c5216e519a071d601bedd150f3cd026</loc:spPassword>

      <loc:timeStamp>20120101010101</loc:timeStamp>

      <loc:newPassword>wi2a7BAH0QPd2LRdmcgC9w==</loc:newPassword>

    </loc:changePassword>

  </soapenv:Body>

</soapenv:Envelope>
```

6.8.2 Response example:

- Example1: Success response

```
<soapenv:Envelope xmlns:soapenv="http://schemas.xmlsoap.org/soap/envelope/"
xmlns:loc="http://www.csapi.org/schema/transaction/data/v1_0/local" xmlns:res="http://api-
v1.gen.mm.vodafone.com/mminterface/response" xmlns:res1="http://api-v1.gen.mm.vodafone.com/mminterface/result">

  <soapenv:Header/>

  <soapenv:Body>

    <loc:changePassword Response>

      <loc:result>

        <res:ResponseCode>00000000</res:ResponseCode>

        <res:ResponseDesc>Success</res:ResponseDesc>

      </loc:result>

    <loc:changePasswordResponse>

  </soapenv:Body>
```

PROJECT NAME: M-PESA	
DOCUMENT NAME: DEVELOPER'S GUIDE- B2B INTERFACE	VERSION: 0.3
COMPANY/DIVISION: PRODUCT AND SERVICE DEVELOPMENT	DATE: 24 TH APRIL 2015

</soapenv:Envelope>

- Example2: Error response caused by authentication failed.

```
<soapenv:Envelope xmlns:soapenv="http://schemas.xmlsoap.org/soap/envelope/" xmlns:req="http://api-
v1.gen.mm.vodafone.com/mminterface/request">

  <soapenv:Header/>

  <soapenv:Body>

    <req:ResponseMsg><![CDATA[<?xml version="1.0" encoding="UTF-8"?>

<response xmlns="http://api-v1.gen.mm.vodafone.com/mminterface/response">

  <ResponseCode>100000007</ResponseCode>

  <ResponseDesc>Authentication failed</ResponseDesc>

</response>]]></req:ResponseMsg>

  </soapenv:Body>

</soapenv:Envelope>
```